

Yankalilla Pedestrian and Cycling Network Plan

Footpath Priority Plan

District Council of Yankalilla

2 August 2019
Ref: 20190034R001



Building exceptional
outcomes together



Document History and Status

Rev	Description	Author	Reviewed	Approved	Date
A	For Client Comment	AN	CH	CH	25/06/2019
B	Final	AN	PS	PS	23/07/2019
C	Update with Council comments	AN	PS	PS	2/08/2019

© Tonkin Consulting Pty Ltd

This document is, and shall remain, the property of Tonkin Consulting. The document may only be used for the purposes for which it was commissioned and in accordance with the Terms of Engagement for the commission. Unauthorised use of this document in any form whatsoever is prohibited.



Contents

Project: Yankalilla Pedestrian and Cycling Network Plan | Footpath Priority Plan
Client: District Council of Yankalilla
Ref: 20190034R001

1	Background	5
2	Extent of Townships	6
2.1	Carrickalinga	6
2.2	Normanville.....	7
2.3	Yankalilla	7
2.4	Myponga	8
3	Assessment Model	9
3.1	Priority	9
3.2	Hierarchy	15
4	Assessment of Footpath Network	17
4.1	Assumptions.....	17
4.2	Outcomes	17
4.3	Crash History.....	18
5	Proposed Shared Paths	19
6	Footpath Material	22
6.1	Spray Seal	22
6.2	Hot Mix	22
6.3	Brick Pavers	23
6.4	Concrete	23
6.5	Gravel	23
6.6	Summary.....	24



Tables

Table 1	Town to Town Connector Scoring	9
Table 2	Vulnerable Pedestrians Scoring	9
Table 3	Servicing Activity Node/Point of Interest Scoring	10
Table 4	Activity Node/Point of Interest Descriptions.....	10
Table 5	Missing Link Between Paths Scoring	11
Table 6	Bike Route Scoring	11
Table 7	Bike Route Description	12
Table 8	Number of Dwellings Serviced Scoring	12
Table 9	Criteria Weighting Factors.....	13
Table 10	Priority Scoring	14
Table 11	Hierarchy Scoring.....	15
Table 12	Hierarchy Design Standards	16
Table 13	Footpath Material Summary	24

Figures

Figure 1	Carrickalinga Township Extents	6
Figure 2	Normanville and Yankalilla Townships Extents	7
Figure 3	Myponga Township Extent.....	8

Appendices

Appendix A – Footpath Priority Existing and Proposed Paths

Appendix B – Footpath Priority Existing Paths

Appendix C – Footpath Priority Proposed Paths



1 Background

Tonkin has been engaged by the District Council of Yankalilla to develop a footpath network plan for the townships of Carrickalinga, Normanville, Yankalilla and Myponga.

Currently there are a number of roads (particularly in Carrickalinga) which do not have a footpath and pedestrians are forced to walk on the road. In addition to this, a number of new subdivisions were required to provide a footpath as part of the development. Although these subdivisions have footpaths of some degree, some of the roads connecting the developments to the townships do not have paths, resulting in isolated areas of path.

Council has sought development of a guideline to form a simple priority system where a score can be assigned to the following six key criteria, based on the characteristics of the path:

- Town to town connector
- Use by vulnerable pedestrians
- Services activity node/point of interest
- Missing link between existing paths
- Existing bike routes
- Number of dwellings serviced.

The scoring of these criteria will form the priority of each segment of footpath and can form the order of priority of works.

In combination with the priority, a hierarchy has been developed which classifies the requirements of the path based on the location and usage.

The priority and hierarchy has been applied to both the existing footpaths in the townships, along with proposed new footpaths. This provides a complete path network with an order of works and a standard for each path.



2 Extent of Townships

This project considers the townships of Carrickalinga, Normanville, Yankalilla and Myponga. However, the methodology used has been designed to be flexible and can be applied to any of the townships in the District Council of Yankalilla.

2.1 Carrickalinga

Carrickalinga is located on the coastline to the north of Normanville. The extent of the township of Carrickalinga is shown below.

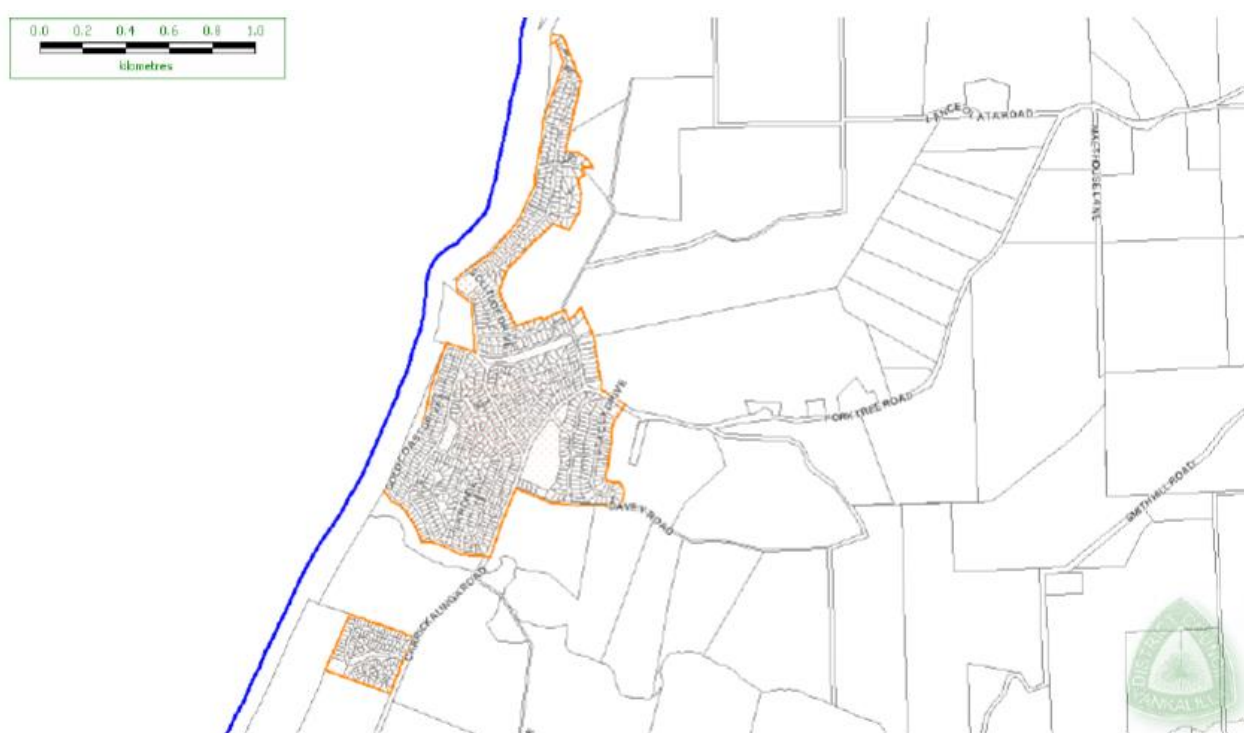


Figure 1 Carrickalinga Township Extents

Carrickalinga does not have any available services such as shops, schools or other facilities, however it provides high recreational value with access to a substantial beach frontage. There are a large number of residential/holiday homes located in this area, with high tourist value. Although Carrickalinga only provides residential and recreational facilities, it is close to Normanville which has a range of services. This makes the link between Carrickalinga and Normanville particularly important.



2.2 Normanville

Normanville is located to the south of Carrickalinga and forms a link between Carrickalinga and Yankalilla. As with Carrickalinga, Normanville has direct access to the beach with facilities such as a caravan park, a kiosk/café, large carpark and a jetty.

The extent of Normanville is shown below.

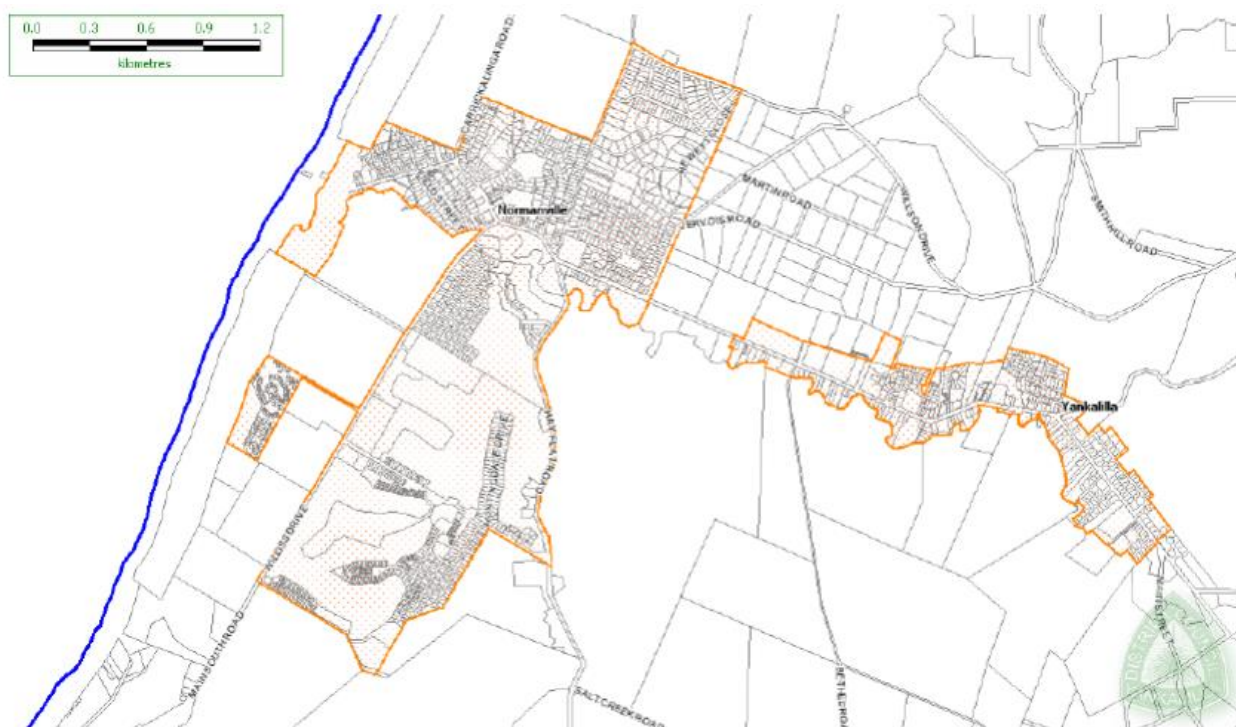


Figure 2 Normanville and Yankalilla Townships Extents

The township of Normanville provides a number of services such as take-away food stores/cafes/restaurants, shops/service stations, a post office, a hotel and a holiday park, church and a golf course to the south. There are a number of parks and open areas, providing recreational value to both tourists and residents.

The golf course and surrounding development is detached from the main township but linked by Main South Road.

2.3 Yankalilla

Yankalilla is located inland from Normanville, and provides services such as an area school, a family practice, banks, a post office, sporting clubs, a church, shops/food outlets, the Council office and a CFS station.

Yankalilla provides greater services for local residents than Normanville and Carrickalinga. The extents of the township is shown in Figure 2 above. Yankalilla and Normanville are linked by Main South Road.



2.4 Myponga

Myponga is remote from the other townships and is located approximately 13.5km north-east along Main South Road from Yankalilla. Although there is not likely to be pedestrian movements between Myponga and the other townships, cyclists may travel along South Road, particularly for recreation purposes.

Myponga is located adjacent to the Myponga Reservoir, and contains a school, church, shops/food outlets, a post office, a CFS station and a brewery.

The extent of the township of Myponga is shown below.

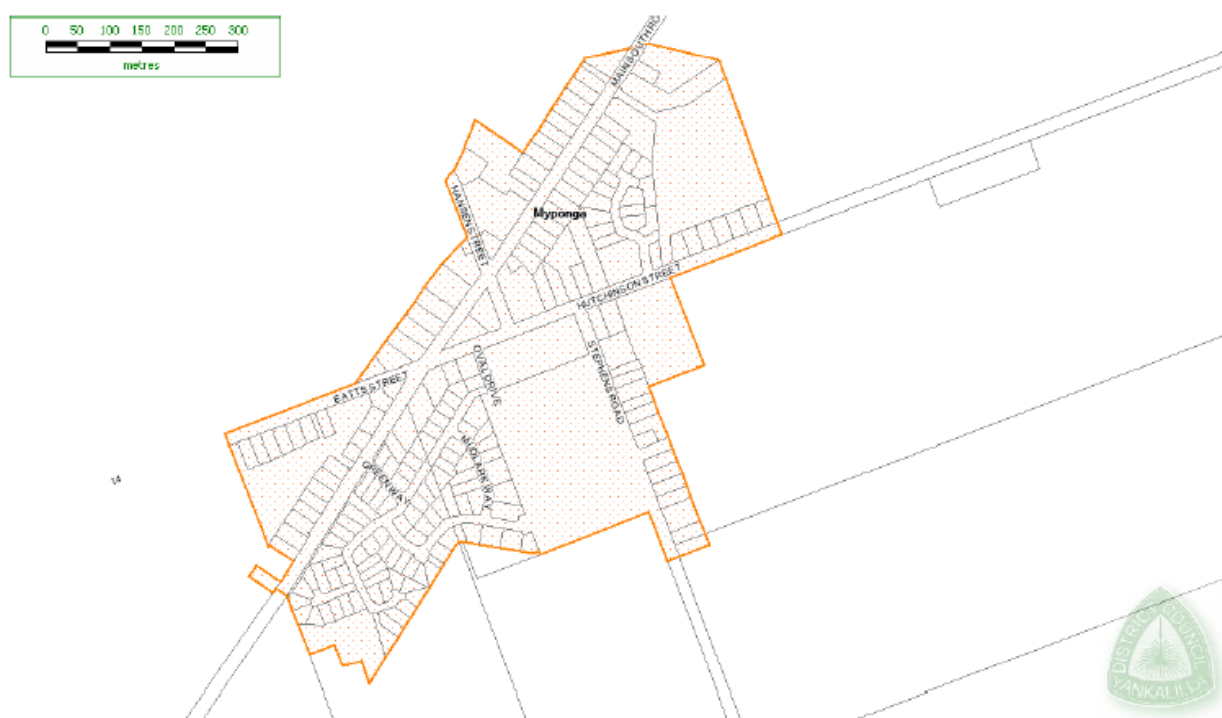


Figure 3 Myponga Township Extent



3 Assessment Model

The footpath assessment model is broken down into two categories:

- Priority
- Hierarchy

The assessment model can be applied to both existing footpaths in the District Council of Yankalilla and proposed new footpaths.

3.1 Priority

The priority of the path determines the order of works that should be undertaken, considering the importance of the footpath to both local residents and tourists. A score out of 5 is applied to each of the criteria depending on the characteristics and location of the path. A weighting score is then applied to each criteria to produce a score out of 100.

3.1.1 Town to Town Connector

This criterion considers whether the footpath provides a direct link between townships, such as Carrickalinga Road, between Normanville and Carrickalinga. The path either will or won't provide this connection and so the scoring is simply as follows.

Table 1 Town to Town Connector Scoring

Description	Score
Provides town to town connection	5
Does not provide a town to town connection	0

Town to town connections are important routes, particularly for cyclists. Pedestrian/cyclist traffic is expected between towns to access different services/tourist locations, and so extra consideration should be given to these paths.

3.1.2 Use by Vulnerable Pedestrians

Paths that are used by children or the elderly should have special consideration due to the increased need for good condition paths. These pedestrians have particular needs such as access for gophers or mobility support equipment, increasing the priority of these footpaths.

The scoring for this criterion is as follows.

Table 2 Vulnerable Pedestrians Scoring

Description	Score
Used by vulnerable pedestrians	5
Is not used by vulnerable pedestrians	0

Examples of paths that are used by vulnerable pedestrians are paths that directly service schools, kindergartens, playgrounds, sports facilities, aged care facilities and medical facilities.



3.1.3 Services Activity Node/Point of Interest

Activity nodes and points of interest are locations such as beaches with high tourist value, shops/shopping centres, restaurants/cafes/hotels/take away food outlets, schools/churches/community centres and lookouts/tourist attractions. There are a large variety of locations that could be considered an activity node or point of interest, and this considers anything that draws and creates concentrations of pedestrians.

Activity nodes and points of interest will have higher volumes of pedestrians and are considered to be important in determining the priority of paths.

The scoring is as follows.

Table 3 Servicing Activity Node/Point of Interest Scoring

Description	Score
Services very high volume activity node	5
Services high volume activity node	4
Services medium volume activity node	2
Services low volume activity node	1
Does not service an activity node	0

Higher volume activity nodes could consist of one significant attraction, or a number of smaller ones. Some examples of each category are as follows.

Table 4 Activity Node/Point of Interest Descriptions

Activity Node/Point of Interest	Examples
Very High	Jetty/beaches, points of high tourist value, large shopping centre complexes, large carparks connecting to other nodes
High	Popular facilities to locals or tourists such as restaurants, hotels, cafes, takeaway food. These are likely to be related to food.
Medium	Smaller shops such as gift shops
Low	Smaller points of interest such as small monuments, isolated shops with low demand, bulky retail shops unlikely to draw large volumes of foot traffic



3.1.4 Missing Link Between Paths

This category only applies to planned footpaths, when the path will connect 2 existing paths which otherwise do not have a footpath connection. An example of this is a planned footpath which would connect the path network of an isolated new development to the main township. This is important as it not only services the development, it links the two isolated footpaths increasing mobility and improving the effectiveness of the isolated paths.

The scoring for this criterion is as follows.

Table 5 Missing Link Between Paths Scoring

Description	Score
Missing link between paths	5
Not a missing link	0

3.1.5 Existing Bike Route

Although Council does not have a formal bike plan available, likely routes can be identified based on attractions for cyclists, likely cycling routes to other towns/locations and locations where children are likely to ride. Recent changes to road laws now allow cyclists to utilise footpaths, creating a mix of traffic and providing an emphasis on the priority to safely manage the usage.

Bike routes have been divided into primary, collector and local, with the scoring shown below.

Table 6 Bike Route Scoring

Description	Score
Primary bike route	5
Collector bike route	3
Minor local bike route	1
No bike route	0

A description of each category is provided below.



Table 7 **Bike Route Description**

Bike Route	Description
Primary	This includes routes for long distance trips such as between towns and along main roads. It also includes shared paths where high cyclist volumes are expected.
Collector	These have less volume than primary routes, but generally consist of a connection between a number of minor routes or between minor routes and major routes. This could also involve routes to a medium size point of interest which is likely to attract cyclists.
Minor local	Low volume routes, generally consisting of short trips. This could be a direct link between a medium to large residential area and a park, where bike traffic is expected however it will be limited to a small/isolated supply.

3.1.6 Number of Dwellings Serviced

The number of dwellings that a footpath services will provide a good indication of the expected volume of pedestrians (in residential environments). This includes both the number of houses on the street the footpath is on (including both sides of the road even where footpaths are provided on each side), as well as the expected through traffic.

The scoring is shown below.

Table 8 **Number of Dwellings Serviced Scoring**

Description	Score
Over 100 dwellings serviced	5
60-100 dwellings serviced	4
30-60 dwellings serviced	3
10-30 dwellings serviced	1
Less than 10 dwellings serviced	0



3.1.7 Weighting System

After a score is assigned to each of the criteria described above, a weighting factor is applied based on the importance of the criteria, which when multiplied to the base scores, results in a total score out of 100.

The following are the weighting factors.

Table 9 Criteria Weighting Factors

Criteria	Weighting factor
Town to Town Connector	3.5
Use by Vulnerable Pedestrians	2.5
Services Activity Node/Point of Interest	6.0
Missing Link Between Existing Paths	2.0
Existing Bike Route	1.5
Dwellings Serviced	4.5

The weighting factors were set (through liaison with Council staff) to prioritise footpaths which are likely to have a large volume of pedestrians over other factors. This is to identify the paths which are likely to have a benefit to the greatest number of people and serve both locals and tourists. The activity nodes/points of interest criterion is weighted the highest, as this will draw both local residents and tourists. Tourists are likely to add a large volume of pedestrians compared to the standard local use and has additional importance supporting the local economy. As such, this is considered a higher priority.

3.1.8 Priority Score

Based on the weighted score, a number from 1-5 was assigned to each of the footpaths to provide a simple score to assess the priority of a path.

The score was based on the following.



Table 10 **Priority Scoring**

Weighted Score	Priority Score
80-100	1
60-80	2
40-60	3
20-40	4
0-20	5

A category was added for new paths; priority 6. Paths that are considered as priority 6 represents a future path which will service a very low number of dwellings in a low speed environment and is considered to be of the lowest priority and should be considered for long term future planning consideration rather than the short to medium term planned works.

A minor, typically dead end, road of less than 100m is classified to have a priority score of 6. Generally, road humps/cushions are spaced at a distance of 70-100m as this is the distance to limit acceleration between devices. As such, a road length of 100m is considered to be short enough to limit acceleration and promote a low speed environment. This low speed environment combined with the local nature of the road, allows for a safer shared roadway between vehicles and pedestrians, and reduces the urgency for a footpath.



3.2 Hierarchy

The hierarchy of each footpath, existing and proposed, is divided into the 5 categories utilising a similar approach to that used to score the priority assessment. The 5 categories are as follows.

Table 11 Hierarchy Scoring

Category	Description	Road Category
1	School zones, hospitals, shared paths	N.A.
2	Main streets, high tourist zones, links between townships (unless shared path as category 1)	Arterial Roads – Class B
3	Major collector roads, major bike routes, high density of housing, used as a through route	Class B
4	Major local road, medium density of housing, some through traffic, generally connects a small number of very minor local roads	Class C1 - Class C2
5	Local roads, no/little through traffic, generally services low volumes of local residents	Class C2

Based on the hierarchy score above, a set of design standards has been developed outlining the minimum requirements for a footpath.

The key components for the design standards are shown in the table below. For the full design standards refer to Appendix A.



Table 12 Hierarchy Design Standards

	Category 1	Category 2	Category 3	Category 4	Category 5
Path on one or both sides	Both	Both	Preferably Both	One	One
Material	Brick Paved/Concrete/Asp halt (spray seal for off-road shared paths)	Brick Paved/Concrete/Asp halt	Brick Paved/Concrete/Asp halt	Brick Paved/Concrete/Asp halt	Brick Paved/Concrete/Asp halt
Desirable width	3.0m (2.5m for off- road shared paths)	3.0m	2.4 preferable; 1.8m ideal; 1.2 minimum	1.5m or 2.5m where cyclists expected	1.2m
Minimum general width for clear path of travel	1.8m	1.5m along building frontage (outdoor dining kerbside); 1.8m for streets of 1,000m or more in length; with passing bays	1.0m with passing bays; 1.2m for streets of 500m or more in length	1.0m with passing bays; 1.2m for streets of 500m or more in length	1.0m
Setback of clear path of travel from carriageway	0.7m (to allow for poles, car doors, street furniture), 1m where adjacent to parking	2.0m with street trees; 0.7m otherwise or 1m where adjacent to parking	1.2m to carriageway, unless trees provided in protuberances; 1.0m to carriageway without trees. Subject to terrain and existing driveway gradients	1.2m to carriageway, unless trees provided in protuberances; 1.0m to carriageway without trees. Subject to terrain and existing driveway gradients	Adjacent to kerb, unless higher levels of on street parking or street planting is envisaged
Cross fall	1:200 min, 1:40 max (Asphalt max 1:33)	1:200 min, 1:40 max (Asphalt max 1:33)	1:200 min, 1:40 max (Asphalt max 1:33)	1:200 min, 1:40 max (Asphalt max 1:33)	1:200 min, 1:40 max (Asphalt max 1:33)
Gradient	Max 1:20	Max 1:20	Max 1:20	Max 1:14 with landings	1:10



4 Assessment of Footpath Network

Both the existing footpaths and proposed footpaths were assessed based on the model described in section 3. This was carried out for each individual section of path within the network, assigning a priority and hierarchy score.

The following inputs were referenced during the assessment:

- Existing land use data
- Crash history data, particularly involving pedestrians (this is referenced in section 4.3 below)
- Customer requests from January 2014 to January 2019, provided by Council
- Points of interest and activity nodes provided by Council (in addition to any identified during the assessment)

4.1 Assumptions

The following assumptions were used when assessing each footpath segment.

- All roads should have footpath accessibility. This includes all minor cul-de-sacs and connections between dwellings and the main townships. Ideally every house should have a footpath to access the township, as this provides increased safety and accessibility for pedestrians (especially the elderly with mobility support equipment). Based on this a footpath has been proposed to provide access to each dwelling in the township areas.
- The recommendation for a new footpath/footpath upgrade does not mean that it must be done or needs to be done within a certain timeframe. The assessment undertaken shows the ideal scenario where all footpaths are installed/upgraded to provide access to all. Given the distribution of the population in the townships and Councils budget, it may not be feasible or practical to provide all of the footpaths recommended. The priority system will create an order of works, however the total number of works is subject to budgetary considerations.
- The number of dwellings serviced is based on assumed travel routes that are expected to be used. Where applicable, multiple travel routes were considered where pedestrians are equally likely to travel in either direction or to access multiple sites.
- No formal bike route plans have been provided, and so the bike route criterion is based on likely routes cyclists will utilise. These included considerations such as access to parks for local routes, or main roads through towns for major cycling routes.
- The use by vulnerable groups was based on the proximity to activity nodes which will attract vulnerable users (such as schools or aged care facilities). As it is not known if these groups reside in common areas (such as a street or area of elderly residents), the vulnerable groups criterion could not be applied to local roads without the presence of a related activity node.
- The assessment of activity nodes was based on size, location and assumed destinations for both visitors and residents. The actual demand from activity nodes may differ, particularly with food outlets, may be based on the attraction of the facility.

4.2 Outcomes

The results from the assessment are presented in excel format and have been provided to Council (Exponare dated 2nd August 2019). The image below provides a visual representation of the network plan. The hierarchy is shown by the thickness of the lines while the priority is represented by the colour.

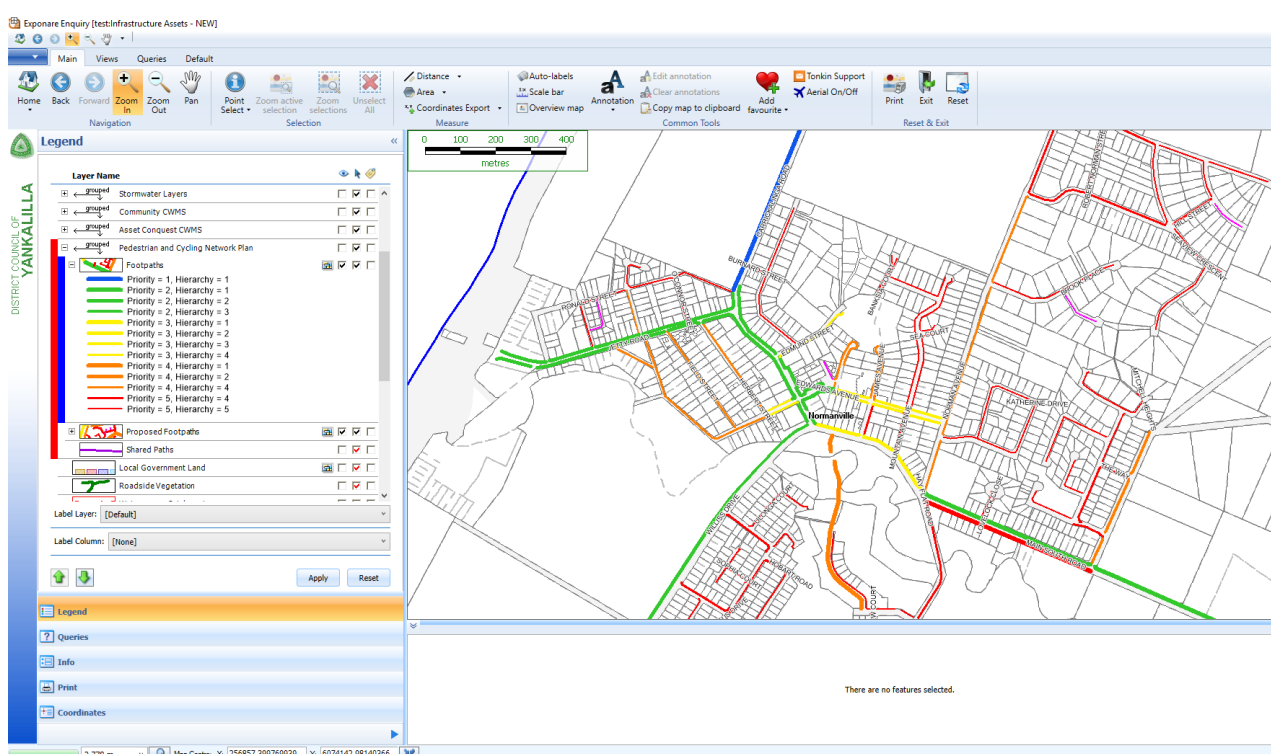
Note using concrete as the footpath type indicates the total area value of proposed footpath for each priority.



4.3 Crash History

Available crash history data was analysed to determine if there were any key sites where there is a concentration of crashes involving pedestrians or cyclists. Data was obtained from Location SA, which consists of recorded crashes between 2013 and 2017. Of the recorded crashes, less than 5 across the entire study area involved cyclists or pedestrians. None of these crashes were recorded in proximity of each other and so there is no statistical evidence of high risks areas to pedestrians or cyclists.

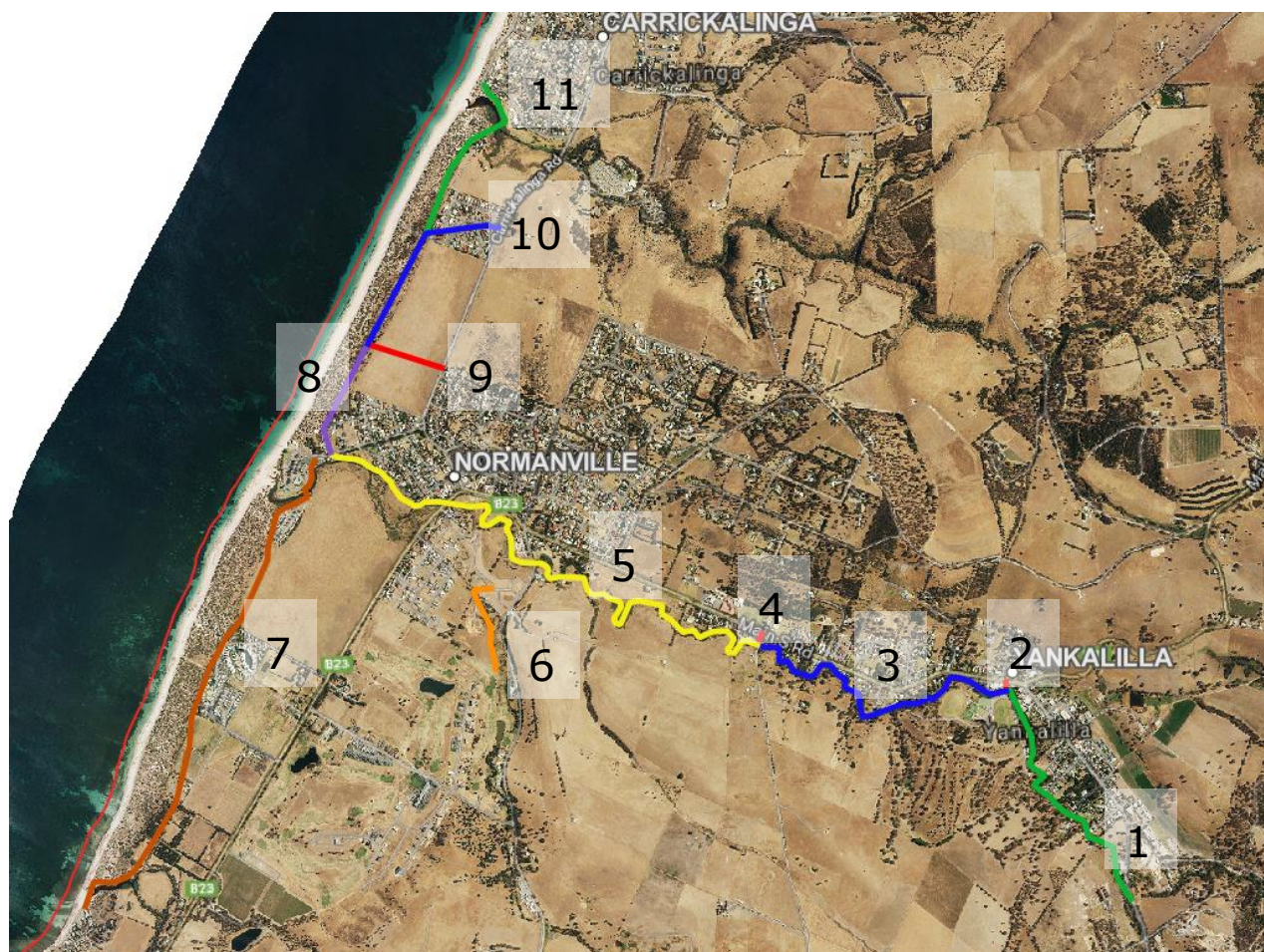
Due to this, the crash history was not considered in the assessment of footpath priority.





5 Proposed Shared Paths

Council has a network of proposed shared paths as shown on the figure below:



It is noted that the final alignments of these paths has not been determined and are subject to negotiation with land owners and a more detailed assessment of the terrain encountered.

The assessment model outlined was not applied to these shared paths due to following reasons:

- They are off-street and do not provide as convenient route as the road path network, however they provide great significant recreational and tourist value.
- The number of residents that they service is difficult to estimate as they may not represent the most direct route for are not typical daily paths of travel and are more likely to be used for recreation
- They do not fit into Councils standard footpath plan to provide footpath access to residents.

Although the priority assessment is not applicable to the shared paths, a costing has been developed based on the following assumptions:

- The alignment provided by Council has been used to calculate the length of each section. It is noted that the share path may deviate from this path, altering the length.
- It is assumed that all of the paths will be 2.5m wide and constructed from spray seal.



- The costing allows for the construction of the pavement only and does not allow for land acquisition, earthworks or construction of any bridges or other structures unless otherwise noted.

The assessment of each section of proposed shared path is below.

Path Number	Length (m)	Cost	Comments
1	1,460	\$179,000	Connection is a lower priority as it does not terminate at a significant service
2	-	-	Utilise existing 1.8m wide separated pedestrian walkway connection between shared path and Main South Road. The existing site constraints are unlikely to allow for the construction of a 2.5m path.
3	1,750	\$214,400	There may be issues with crossing Bethel Road due to site constraints and the location of the bridge. Land acquisition is likely required.
4	60	\$7,400	Path follows Bethel Road. No room for a shared path adjacent the road, so the existing road could be used as a connection to the shared path. It is unlikely that new pavement construction is required.
5	3,360	\$411,600	It may not be possible for the shared path to pass under Main South Road bridge due to site constraints between the bridge and the body of water. An alternative path could cross Main South Road north of the bridge, follow the eastern side Main South Road to the bridge, then join the alignment shown. Cyclist and pedestrian safety would need to be considered at the crossing point on Main South Road. Sight distances will need to be considered.
6	530	\$65,000	This section of shared path is part of a new development and is to be constructed by the developer. This will service the proposed development and will connect to the existing shared path which leads into Normanville.
7	2,820	\$345,500	Consideration will need to be given to how the path will cross Bungala River, near Jetty Caravan Park. As the shared path will also service the caravan park, it may be an option to utilise the existing bridge and caravan park internal road network. The internal road network should have low travel speeds which would increase safety for pedestrians and cyclists, however it is not ideal to utilise the caravan park as part of a wider shared path network. The alternative is to construct a new pedestrian/cyclist bridge to the east of the caravan park, however the bridge



is likely to be approximately 100m long and could cost approximately \$1M.

Another option could be to follow the southern side of the Bungala River to connect to Path 5 via the existing path on Main South Road.

The termination location of this path is yet to be determined, noting the difficulty crossing the Yankalilla River.

8	630	\$77,200	
9	410	\$50,200	
10	1,040	\$127,400	<p>The connection to the development on the northern end of this section should be considered. An option could be to connect to the existing road and path network, but constructing a shared path through the development does offer a higher level of service for the path user.</p> <p>It would be preferable to continue the shared path adjacent Shakeshaft Drive to connect to Carrickalinga Road.</p>
11	980	\$120,000	<p>The crossing point over Carrickalinga River may be difficult and expensive to construct, depending on site conditions and crossing location. The bridge structure could be around 50m long and cost approximately \$500,000</p> <p>An alternative is to follow the river east and connect to the existing shared path on Carrickalinga Road. If required a shared path could be constructed on the northern side of the river or along Riverview Drive to connect back to Gold Coast Drive. This option requires a much greater length (approximately 1,000m) of path at an estimated cost of \$123,000, and so the two options will need to be examined in detail.</p>



6 Footpath Material

There are a number of methods of footpath construction with advantages and disadvantages of each. The main footpath materials are listed below:

- Spray Seal
- Hot Mix
- Pavers
- Concrete
- Gravel

6.1 Spray Seal

Advantages	Disadvantages
<ul style="list-style-type: none">• Easy to construct• Relatively low cost	<ul style="list-style-type: none">• Poor surface finish• Surface follows contours of land, subject to vertical deformation• Prone to cracking• Prone to deformation over the design life• Untidy edging, prone to chipping• Loses stone over the design life which should be swept up• Short design life

6.2 Hot Mix

Advantages	Disadvantages
<ul style="list-style-type: none">• Provides a thicker base than spray seal, and so is less prone to deformation• Relatively clean edge finish• Smooth surface finish• Relatively cheap to construct, however more expensive than spray seal• Easy to construct	<ul style="list-style-type: none">• Prone to cracking• Prone to deformation over the design life• Moderate design life



6.3 Brick Pavers

Advantages	Disadvantages
<ul style="list-style-type: none">• Excellent finish, with the best visual appearance out of the material types• Unlikely to crack given the thickness and separation between each paver• Longer design life• Easy to maintain	<ul style="list-style-type: none">• Very expensive, most expensive of the options• More difficult to construct compared to other options

6.4 Concrete

Advantages	Disadvantages
<ul style="list-style-type: none">• Good surface and edge finish• Not prone to extensive cracking. Cracking can still occur based on environmental and loading factors (e.g. if vehicles regularly drive over sections of the footpath not designed for vehicles)• Some resistance to deflection. Deflection generally occurs at the construction joints and not mid-section• Easy to construct• Long design life	<ul style="list-style-type: none">• More expensive than other methods• More difficult to maintain than brick pavers

6.5 Gravel

Advantages	Disadvantages
<ul style="list-style-type: none">• Very cheap to construct• Easy to widen and alter if required	<ul style="list-style-type: none">• Poor finish and more difficult to traverse with wheels (such as prams)• Prone to losing stone and require regular top-ups• Follow the lay of the land and provide no resistance to deflection• Very short design life



6.6 Summary

Table 13 Footpath Material Summary

Material	Ease of Construction	Prone to Cracking/Stone Loss	Surface Finish	Cost/m ²	Design Life (Years)
Spray Seal	High	Very High	Poor	\$49	20
Hot Mix	High	High	Average	\$59	25
Brick Pavers	Low	Low	Excellent	\$124	50
Concrete	High	Low	Good	\$84	50
Gravel	High	Very High	Very Poor	\$19	15



Appendix A – Footpath Priority Existing and Proposed Paths

Footpath_ID	Road_Name	From	To	Township	Footpath_Type	Length	Condition	Priority	Hierarchy	Cost
FP-R-0307003	Carrickalinga Road	Broadbeach Drive	Davey Road	Carrickalinga	concrete	142	Minor Deterioration	1	1	\$35,658
FP-R-0307005	Carrickalinga Road	Guinea Place	Riverview Drive	Carrickalinga	concrete	210	Minor Deterioration	1	1	\$52,895
FP-R-0307006	Carrickalinga Road	Riverview Drive	Caudle Lane	Carrickalinga	concrete	118	Minor Deterioration	1	1	\$29,686
FP-R-0307008	Carrickalinga Road	The Esplanade	Burnard Street	Normanville	concrete	1086	Minor Deterioration	1	1	\$273,697
FP-R-0307007	Carrickalinga Road	Caudle Lane	The Esplanade	Normanville	concrete	374	Fair	1	1	\$94,324
FP-R-0307004	Carrickalinga Road	Davey Road	Guinea Place	Carrickalinga	concrete	113	Minor Deterioration	1	1	\$28,400
FP-R-0307009	Carrickalinga Road	Burnard Street	Ronald Street	Normanville	concrete	82	Minor Deterioration	1	1	\$20,639
FP-L-0252007	Jetty Road	Herbert Street	Carrickalinga Road	Normanville	concrete	104	As New	2	2	\$26,158
FP-L-0252006	Jetty Road	Oconnor Street	Herbert Street	Normanville	concrete	23	As New	2	2	\$5,897
FP-L-0252005	Jetty Road	Field Street	Oconnor Street	Normanville	concrete	58	As New	2	2	\$14,490
FP-L-0252004	Jetty Road	Marjory Street	Field Street	Normanville	concrete	68	As New	2	2	\$17,161
FP-L-0252003	Jetty Road	Kemmis Street	Marjory Street	Normanville	concrete	77	As New	2	2	\$19,303
FP-L-0252002	Jetty Road	Croser Street	Kemmis Street	Normanville	concrete	51	As New	2	2	\$12,877
FP-L-0252001	Jetty Road	Purrumba Street	Croser Street	Normanville	concrete	125	As New	2	2	\$31,525
FP-R-0258001	Jetty Road Carpark Entrance	Jetty Road	Car Park	Normanville	concrete	128	As New	2	2	\$32,332
FP-R-0252007	Jetty Road	Herbert Street	Carrickalinga Road	Normanville	concrete	84	As New	2	2	\$21,118
FP-L-0258001	Jetty Road Carpark Entrance	Jetty Road	Car Park	Normanville	Concrete	133	Minor Deterioration	2	2	\$33,541
	118 Jetty Road	Kemmiss Hill Street	Car Park Entrance	Normanville	Concrete	187		2	2	\$47,138
	117 Jetty Road	Heathcote Street	Kemmiss Hill Street	Normanville	Concrete	71		2	2	\$17,857
	116 Jetty Road	Field Street	Heathcote Street	Normanville	Concrete	53		2	2	\$13,454
	115 Jetty Road	Herbert Street	Field Street	Normanville	Concrete	90		2	2	\$22,788
FP-R-TSA001019	Main South Road	Bethel Road	Jervois Road	Yankalilla	concrete	847	As New	2	1	\$213,545
			350m W of Bethel Road							
FP-L-TSA001019	Main South Road	Bethel Road	(Childrens Centre	Yankalilla	Concrete	338	Fair	2	1	\$85,176
	104 St Andrews Boulevard	Huntingdale Drive	Williss Drive	Normanville	Concrete	858		2	3	\$173,012
FP-R-TSA001025	Williss Drive	Main Road	Will Road	Normanville	hotmix bitumen	148	Minor Deterioration	2	3	\$20,914
FP-R-TSA001026	Williss Drive	Will Road	Hobart Road	Normanville	hotmix bitumen	230	Minor Deterioration	2	3	\$32,625
FP-L-TSA001014b	Main South Road	Charles Street	Bungalla Street	Yankalilla	concrete	61	As New	2	2	\$15,473
FP-R-0404001	Yankalilla Oval Entrance	Main South Road	Bridge	Yankalilla	concrete	16	As New	2	2	\$3,956
FP-L-0404001	Yankalilla Oval Entrance	Main South Road	Bridge	Yankalilla	concrete	14	As New	2	2	\$3,553
FP-L-TSA001015	Main South Road	Bungala Street	Glebe Avenue	Yankalilla	concrete	545	Minor Deterioration	2	2	\$137,214
FP-R-0306008	Gold Coast Drive	Solitude Drive	Scenic Way	Carrickalinga	concrete	415	Minor Deterioration	2	1	\$104,454
FP-R-0306009	Gold Coast Drive	Scenic Way	Bennett Street	Carrickalinga	concrete	56	Minor Deterioration	2	1	\$14,036
FP-R-TSA001014	Main South Road	Charles Street	Bungala Street	Yankalilla	concrete	114	Fair	2	2	\$28,652
FP-R-TSA001015	Main South Road	Bungala Street	Glebe Avenue	Yankalilla	concrete	514	Minor Deterioration	2	2	\$129,402
FP-R-TSA001004	Main South Road	Number 50	Hanson Street	Myponga	concrete	108	As New	2	2	\$27,216
FP-R-0288004	Broadbeach Drive	Sunset Drive	Carrickalinga Road	Carrickalinga	concrete	122	Minor Deterioration	2	1	\$30,694
FP-R-0288001	Broadbeach Drive	Gold Coast Drive	Sunset Drive	Carrickalinga	concrete	109	As New	2	1	\$27,493
FP-R-0288002	Broadbeach Drive	Sunset Drive	Taronga Crescent	Carrickalinga	concrete	159	As New	2	1	\$40,068
FP-R-0288003	Broadbeach Drive	Taronga Crescent	Sunset Drive	Carrickalinga	concrete	165	Minor Deterioration	2	1	\$41,605
FP-R-0307012	Carrickalinga Road	Edmund Street	Cheesman Street	Normanville	concrete	137	Minor Deterioration	2	2	\$34,574
FP-R-0307013	Carrickalinga Road	Cheesman Street	Main South Road	Normanville	concrete	53	As New	2	2	\$13,356
FP-L-TSA001014a	Main South Road	Charles Street	Bugala Street	Yankalilla	concrete	24	Fair	2	2	\$6,098
FP-L-TSA001004	Main South Road	Number 50	Hanson Street	Myponga	concrete	134	As New	2	2	\$33,768
FP-L-0307013	Carrickalinga Road	Cheesman Street	Main South Road	Normanville	concrete	51	Minor Deterioration	2	2	\$12,877
FP-L-0307012	Carrickalinga Road	Edmund Street	Cheesman Street	Normanville	concrete	132	Minor Deterioration	2	2	\$33,264
	122 Main South Road	St Andrews Boulevard	Beachside Holiday Park	Normanville	Concrete	319		2	2	\$80,388
	105 Main South Road	St Andrews Boulevard	Union Road	Normanville	Concrete	695		2	2	\$175,088
	79 Williss Drive	Hobart Road	Union Road	Normanville	Concrete	337		2	2	\$84,842

FP-R-0241001	Andrew Avenue	Carrickalinga Road	Mary Avenue	Normanville	concrete	80 Fair	2	2	\$20,059
FP-L-0241001	Andrew Avenue	Carrickalinga Road	Mary Avenue	Normanville	concrete	110 Fair	2	2	\$27,644
FP-R-TSA001020	Main South Road	Jervois Road	Lovelock Close	Normanville	concrete	322 Fair	2	1	\$81,068
FP-R-TSA001021	Main South Road	Lovelock Close	Norman Avenue	Normanville	concrete	175 Fair	2	1	\$44,176
FP-R-0353001	Hansen Street	Hutchinson Street	Main South Road	Myponga	hotmix bitumen	83 Minor Deterioration	2	3	\$11,696
	50 Gold Coast Drive	Lewis Road	Lyddon Road	Carrickalinga	Concrete	500	3	3	\$100,846
	41 Gold Coast Drive	Lyddon Road	Lewis Road	Carrickalinga	Concrete	434	3	3	\$87,452
FP-R-0307010	Carrickalinga Road	Ronald Street	Jetty Road	Normanville	concrete	39 Minor Deterioration	2	2	\$9,904
FP-R-0307011	Carrickalinga Road	Jetty Road	Edmund Street	Normanville	concrete	170 Fair	2	2	\$42,941
FP-L-0307011	Carrickalinga Road	Jetty Road	Edmund Street	Normanville	concrete	159 Minor Deterioration	2	2	\$39,942
FP-L-0307010	Carrickalinga Road	Ronald Street	Jetty Road	Normanville	concrete	74 Minor Deterioration	2	2	\$18,698
	121 Main South Road	Eatts Street	Hansen Street	Myponga	Concrete	169	3	2	\$42,667
	114 Main South Road	Hutchinson Street	Hansen Street	Myponga	Concrete	121	3	2	\$30,576
FP-R-0242002	Edmund Street	Barton Crescent	End	Normanville	hotmix bitumen	165 Minor Deterioration	3	4	\$14,629
FP-R-0242001	Edmund Street	Carrickalinga Road	Barton Crescent	Normanville	hotmix bitumen	59 Minor Deterioration	3	4	\$5,230
FP-R-0306002	Gold Coast Drive	Elizabeth Crescent	Seaspray Avenue	Carrickalinga	concrete	247 Minor Deterioration	3	1	\$62,269
FP-R-0306003	Gold Coast Drive	Seaspray Avenue	Surf Avenue	Carrickalinga	concrete	209 Minor Deterioration	3	1	\$52,769
FP-R-0306004	Gold Coast Drive	Surf Avenue	Elizabeth Crescent	Carrickalinga	concrete	299 Minor Deterioration	3	1	\$75,323
FP-R-0306006	Gold Coast Drive	Gulf Close	Petrel Close	Carrickalinga	concrete	86 Minor Deterioration	3	1	\$21,773
FP-R-0306007	Gold Coast Drive	Petrel Close	Solitude Drive	Carrickalinga	concrete	77 Minor Deterioration	3	1	\$19,505
FP-R-TSA001016	Main South Road	Gleve Avenue	Manisty Drive	Yankalilla	concrete	291 Minor Deterioration	3	2	\$73,282
FP-R-0306005	Gold Coast Drive	Elizabeth Crescent	Gulf Close	Carrickalinga	concrete	94 Minor Deterioration	3	1	\$23,587
FP-R-0306001	Gold Coast Drive	Start	Elizabeth Crescent	Carrickalinga	concrete	54 Minor Deterioration	3	1	\$13,633
FP-R-TSA001018	Main South Road	Goeorge Drive	Bethel Road	Yankalilla	concrete	316 Minor Deterioration	3	1	\$79,733
FP-R-TSA001017	Main South Road	Manisty Drive	George Drive	Yankalilla	concrete	152 Minor Deterioration	3	2	\$38,203
FP-L-TSA001016	Main South Road	Gleve Avenue	Manisty Drive	Yankalilla	concrete	310 Minor Deterioration	3	2	\$78,019
FP-L-TSA001018	Main South Road	George Drive	Bethel Road	Yankalilla	Concrete	303 Fair	3	1	\$76,432
FP-L-TSA001017	Main South Road	Manisty Drive	George Drive	Yankalilla	Concrete	193 Minor Deterioration	3	2	\$48,510
FP-R-TSA003001	Main Street	Main South Road	Arthur Street	Yankalilla	concrete	22 As New	3	2	\$5,544
FP-R-TSA003001	Main Street	Main South Road	Arthur Street	Yankalilla	concrete	173 Fair	3	2	\$43,672
FP-L-TSA003001	Main Street	Main South Road	Arthur Street	Yankalilla	concrete	173 Minor Deterioration	3	2	\$43,470
	112 Hutchinson Street	Stephens Road	Amber Grove	Myponga	Concrete	110	3	4	\$13,807
	110 Stephens Road	Hutchinson Street	Oval Entrance	Myponga	Concrete	238	3	4	\$29,930
	109 Hutchinson Street	Hansen Street	Stephens Road	Myponga	Concrete	102	3	1	\$25,766
FP-L-0238001	Edwards Avenue	Mary Avenue	James Avenue	Normanville	hotmix bitumen	93 Minor Deterioration	3	3	\$13,183
FP-L-0238002	Edwards Avenue	James Avenue	Mountain Avenue	Normanville	hotmix bitumen	94 Minor Deterioration	3	3	\$13,310
FP-R-0238001	Edwards Avenue	Mary Avenue	James Avenue	Normanville	Concrete	102 Fair	3	3	\$20,624
FP-R-0238002	Edwards Avenue	James Avenue	Mountain Avenue	Normanville	Concrete	92 Minor Deterioration	3	3	\$18,547
FP-R-TSA001024	Main South Road	James Avenue	Main Road	Normanville	concrete	130 Minor Deterioration	3	2	\$32,836
	120 Main South Road	Green Way	Eatts Street	Myponga	Concrete	158	3	2	\$39,797
	107 Main South Road	Green Way	Hutchinson Street	Myponga	Concrete	165	3	2	\$41,599
FP-R-0352001	Hutchinson Street	Main South Road	Hansen Street	Myponga	concrete	137 Fair	3	1	\$34,499
	45 Lyddon Road	Gold Coast Drive	Lewis Road	Carrickalinga	Concrete	85	3	4	\$10,764
	44 Lewis Road	Lyddon Road	Lyddon Road	Carrickalinga	Concrete	40	3	4	\$5,000
FP-R-0405001	Oval Road	Hutchinson Street	Verde Drive	Myponga	hotmix bitumen	56 As New	3	3	\$7,972
FP-R-TSA001023	Main South Road	Mountain Avenue	James Avenue	Normanville	concrete	95 Minor Deterioration	3	2	\$23,965
FP-R-TSA001022	Main South Road	Norman Avenue	Mountain Avenue	Normanville	concrete	112 Fair	3	2	\$28,224
FP-R-0245002	Cheesman Street	Herbert Street	Carrickalinga Road	Normanville	hotmix bitumen	88 Minor Deterioration	3	4	\$7,779
FP-L-0245002	Cheesman Street	Herbert Street	Carrickalinga Road	Normanville	hotmix bitumen	78 Minor Deterioration	3	4	\$6,938
	73 Cheesman Street	Field Street	Herbert Street	Normanville	Concrete	97	3	4	\$12,194

	36 Lyddon Road	Tuna Crescent	Lewis Road	Carrickalinga	Concrete	71		3	4	\$9,004
	35 Lyddon Road	La Ronde	Tuna Crescent	Carrickalinga	Concrete	79		3	4	\$9,969
FP-R-TSA003002	Main Street	Arthur Street	Mary Street	Yankalilla	concrete	160	Fair	3	2	\$40,370
FP-L-TSA003002	Main Street	Arthur Street	Mary Street	Yankalilla	concrete	149	Minor Deterioration	3	2	\$37,447
	55 Forktree Road	Brown Road	Forktree Brewing	Carrickalinga	Concrete	1248		4	2	\$314,485
	54 Carrickalinga Road	Broadbeach Drive	Brown Road	Carrickalinga	Concrete	400		4	2	\$100,892
111	Stephens Street	Oval Entrance	160m South of Oval Entrance	Myponga	Concrete	171		4	4	\$21,524
74	Herbert Street	Jetty Road	Cheesman Street	Normanville	Concrete	305		4	4	\$38,393
72	Field Street	Jetty Road	Cheesman Street	Normanville	Concrete	333		4	4	\$41,919
71	Heathcote Street	Kemmiss Hill Street	Field Street	Normanville	Concrete	347		4	4	\$43,756
49	Lewis Road	Gold Coast Drive	Marine Court	Carrickalinga	Concrete	226		4	4	\$28,485
47	Lewis Road	Marine Court	Tuna Crescent	Carrickalinga	Concrete	94		4	4	\$11,818
46	Lewis road	Lyddon Road	Tuna Crescent	Carrickalinga	Concrete	101		4	4	\$12,737
43	Lewis Road	Dolphin Avenue	Lyddon Road	Carrickalinga	Concrete	93		4	4	\$11,690
42	Lewis Road	Dolphin Avenue	Riverview Drive	Carrickalinga	Concrete	181		4	4	\$22,799
40	Riverview Drive	Red Gum Place	Lewis Road	Carrickalinga	Concrete	375		4	3	\$75,633
38	Dolphin Avenue	Lewis Road	La Ronde	Carrickalinga	Concrete	367		4	4	\$46,199
81	Norman Avenue	Main South Road	Katherine Drive	Normanville	Concrete	148		4	4	\$18,605
E002	Main South Road	Myponga Market	72 Main South Road	Myponga	concrete	223		4	2	\$56,196
E001	Main South Road	Myponga Market	87 Main South Road	Myponga	concrete	265		4	2	\$66,780
129	Main Street	McArthur Street	Graham Street	Yankalilla	Concrete	140		4	2	\$35,280
103	Main Street	McArthur Street	Graham Street	Yankalilla	Concrete	140		4	2	\$35,366
FP-R-0237002	James Avenue	Edwards Avenue	End	Normanville	hotmix bitumen	162	Minor Deterioration	4	4	\$14,310
		75m N of Edwards Avenue (Rear of Mitre 10)	End	Normanville	hotmix bitumen	77	Minor Deterioration	4	4	\$6,797
FP-R-0239002	Mary Avenue	Edwards Avenue	End	Normanville	hotmix bitumen	158	Minor Deterioration	4	4	\$13,956
FP-L-0237002	James Avenue	Edwards Avenue	End	Normanville	hotmix bitumen	135	Minor Deterioration	4	4	\$11,965
FP-L-0239002	Mary Avenue	Olive Avenue	End	Normanville	hotmix bitumen	135	Minor Deterioration	4	4	\$11,965
	70 Heathcote Street	Jetty Road	Kemmiss Hill Street	Normanville	Concrete	81		4	4	\$10,253
	69 Kemmiss Hill Street	Jetty Road	Heathcote Street	Normanville	Concrete	123		4	4	\$15,519
	16 Solitude Drive	Gold Coast Drive	Bennett Street	Carrickalinga	Concrete	427		4	4	\$53,810
SUP-0002	Bungala Park	Footbridge	Horizon Development		0 concrete	112	As New	4	1	\$28,224
SUP-0001	Bungala Park	Main South Road	Footbridge		0 concrete	45	As New	4	1	\$11,340
FP-L-0048001	Jervois Road	Johnston Court	The Way	Yankalilla	Concrete	166	Fair	4	3	\$33,466
FP-L-0048002	Jervois Road	The Way	Bower Road	Yankalilla	Concrete	130	Fair	4	3	\$26,148
FP-L-0048001	Jervois Road	Main South Road	Johnston Court	Yankalilla	Concrete	85	Fair	4	3	\$17,136
	17 Bennett Street	Broadbeach Drive	Brown Road	Carrickalinga	Concrete	448		4	4	\$56,500
FP-L-0391002	Verde Drive	70m NE of Green Way	Oval Road	Myponga	hotmix bitumen	158	As New	4	4	\$13,965
FP-L-TSA003004	Main Street	Michael Street	Malakoff Street	Yankalilla	concrete	91	Minor Deterioration	4	2	\$22,856
FP-L-TSA003003	Main Street	Mary Street	Michael Street	Yankalilla	concrete	24	Fair	4	2	\$6,023
	127 Main Street	Michael Street	Malakoff Street	Yankalilla	Concrete	91		4	2	\$22,932
	126 Main Street	Mary Street	Michael Street	Yankalilla	Concrete	24		4	2	\$6,048
FP-R-0201001	Bungala Street	Main South Road	Thomas Street	Yankalilla	Concrete	74	Minor Deterioration	4	4	\$9,374
FP-L-0239001	Mary Avenue	Edwards Avenue	Olive Avenue	Normanville	Concrete	17	As New	4	4	\$2,117
	39 Riverview Drive	Carrickalinga Road	Red Gum Place	Carrickalinga	Concrete	111		4	3	\$22,334
	6 Hansen Street	Main South Road	End	Myponga	Concrete	152		4	4	\$19,203
E004	Meridian Circuit	Navigation Drive	Bungala Park	Normanville	concrete	350	As New	4	1	\$88,200
FP-L-0232002	Norman Avenue	Hastings Street	Brook Place	Normanville	Concrete	266	Fair	4	4	\$33,478
FP-L-0232003	Norman Avenue	Brook Place	Katherine Drive	Normanville	Concrete	442	Fair	4	4	\$55,692
	119 Main South Road	200m South of Green Way	Green Way	Myponga	Concrete	239		4	2	\$60,239

	106 Main South Road	200m South of Green Way	Green Way	Myponga	Concrete	231		4	2	\$58,143
	65 Marjory Street	Jertty Road	Ronald Street	Normanville	Concrete	130		4	5	\$13,132
FP-L-TSA003005	Main Street	Malakoff Street	McArthur Street	Yankalilla	concrete	165	Minor Deterioration	4	2	\$41,656
	128 Main Street	Malakoff Street	McArthur Street	Yankalilla	Concrete	165		4	2	\$41,580
	75 Barton Crescent	Edmund Street	Burnard Street	Normanville	Concrete	247		4	5	\$24,878
FP-R-0212001	Glebe Avenue	Main South Road	Barton Street	Yankalilla	hotmix bitumen	73	Minor Deterioration	5	5	\$5,140
FP-R-0215002	Barton Street	Manisty Drive	Glebe Avenue	Yankalilla	hotmix bitumen	276	Minor Deterioration	5	5	\$19,555
FP-L-0272001	James Drive	Carrickalinga Road	Merino Avenue	Carrickalinga	hotmix bitumen	111	As New	5	4	\$9,806
FP-L-0368001	Johnston Court	Jervois Road	Hunt Drive	Normanville	hotmix bitumen	91	Minor Deterioration	5	4	\$8,045
	88 Hastings Street	Robert Norman Street	Seaview Crescent	Normanville	Concrete	229		5	4	\$28,816
	86 Hastinga Street	Norman Avenue	Robert Norman Street	Normanville	Concrete	172		5	4	\$21,715
	21 Sunset Drive	Horizon Parade	Broadbeach Drive	Carrickalinga	Concrete	248		5	4	\$31,255
FP-L-0267009	Shakeshaft Drive	Marrata Street	Carrickalinga Road	Normanville	hotmix bitumen	33	As New	5	4	\$2,876
FP-L-0261001	Union Road	Main South Road	End Stage 1	Normanville	hotmix bitumen	350	As New	5	4	\$30,940
FP-R-0260001	Hobart Road	Main South Road	End	Normanville	hotmix bitumen	239	As New	5	4	\$21,160
	130 Main South Road	Hay Flat Road	Jervois Road	Normanville	Concrete	502		5	1	\$126,504
	125 The Vines Drive	Main South Road	End	Normanville	Concrete	309		5	5	\$31,147
	124 Main South Road	Beachside Holiday Park	The Vines Drive	Normanville	Concrete	537		5	3	\$108,259
	78 James Avenue	Edwards Avenue	Main South Road	Normanville	Concrete	86		5	4	\$10,891
	58 James Drive	Merino Avenue	Dorset Court	Carrickalinga	Concrete	95		5	4	\$11,990
	15 Elizabeth Crescent	View Place	Gold Coast Drive	Carrickalinga	Concrete	213		5	4	\$26,854
	12 Elizabeth Crescent	Surf Avenue	View Place	Carrickalinga	Concrete	218		5	4	\$27,514
	98 Hay Flat Road	Main South Road	Navigation Drive	Normanville	Concrete	350		5	4	\$44,144
	94 Hill Street	Panorama Crescent	Seaview Crescent	Normanville	Concrete	127		5	4	\$16,019
	30 La Ronde	Guinea Place	Red Gum Place	Carrickalinga	Concrete	199		5	4	\$25,102
	29 Guinea Place	La Ronde	Carrickalinga Road	Carrickalinga	Concrete	78		5	4	\$9,779
	28 La Ronde	Berrima Palce	Guinea Place	Carrickalinga	Concrete	300		5	4	\$37,853
	26 Berrima Place	Broadbeach Drive	La Ronde	Carrickalinga	Concrete	82		5	4	\$10,375
	99 Bungala Street	Symonds Street	Thomas Street	Yankalilla	Concrete	39		5	5	\$3,959
FP-L-0391001	Verde Drive	Cul-de-sac	70m NE of Green Way	Myponga	hotmix bitumen	331	As New	5	4	\$29,329
FP-L-0390001	Green Way	Main South Road	Verde Drive	Myponga	hotmix bitumen	77	As New	5	4	\$6,823
FP-R-0365001	Turnberry Drive	St Andrews Boulevard	Cherry Hills Crescent	Normanville	hotmix bitumen	172	As New	5	4	\$15,195
FP-R-0374001	Nereus Drive	Union Road	Hobart Road	Normanville	hotmix bitumen	172	As New	5	5	\$12,192
FP-R-0268001	Marrata Street	Shakeshaft Drive	Shakeshaft Drive	Normanville	hotmix bitumen	304	As New	5	5	\$21,488
FP-R-0233003	Mountain Avenue	Sea Court	Edwards Avenue	Normanville	hotmix bitumen	214	Fair	5	5	\$15,123
FP-R-0220003	Hunt Drive	The Way	Anna Court	Normanville	hotmix bitumen	62	As New	5	5	\$4,361
FP-R-0220002	Hunt Drive	Magor Close	The Way	Normanville	hotmix bitumen	94	As New	5	4	\$8,292
FP-R-0220001	Hunt Drive	Johnston Court	Magor Close	Normanville	hotmix bitumen	82	As New	5	4	\$7,257
FP-R-0365002	Turnberry Drive	Cherry Hills Crescent	Birkdale Street	Normanville	hotmix bitumen	125	As New	5	4	\$11,071
FP-R-0365003	Turnberry Drive	Birkdale Street	Troon Drive	Normanville	hotmix bitumen	84	As New	5	4	\$7,390
FP-L-0269001	Parrumba Drive	Shakeshaft Drive	Shakeshaft Drive	Normanville	hotmix bitumen	219	As New	5	5	\$15,491
FP-L-0373001	Resolute Avenue	Union Road	Hobart Road	Normanville	hotmix bitumen	264	As New	5	5	\$18,663
FP-L-0233002	Mountain Avenue	Clarke Street	Sea Court	Normanville	hotmix bitumen	119	Minor Deterioration	5	5	\$8,432
FP-L-0233003	Mountain Avenue	Sea Court	Edwards Avenue	Normanville	hotmix bitumen	213	Fair	5	5	\$15,066
FP-L-0219001	The Way	Jervois Road	Hunt Drive	Normanville	hotmix bitumen	83	Minor Deterioration	5	5	\$5,905
FP-L-0263001	Huntingdale Drive	St Andrews Boulevard	End	Normanville	hotmix bitumen	526	As New	5	5	\$37,205
FP-L-0206001	Mary Street	Main Street	Arthur Street	Yankalilla	Concrete	82	Fair	5	5	\$8,215
	85 Norman Avenue	Hastings Street	Robert Norman Street	Normanville	Concrete	407		5	4	\$51,219
	82 Katherine Drive	Norman Avenue	End	Normanville	Concrete	647		5	5	\$65,174
	67 Ronald Street	O'Connor Street	Carrickalinga Street	Normanville	Concrete	176		5	5	\$17,784

	59 James Drive	Dorset Court	Stacey Drive	Carrickalinga	Concrete	93	5	4	\$11,683
	53 Shakeshaft Drive	The Sands	Parrumba Drive	Carrickalinga	Concrete	45	5	5	\$4,531
	19 Horizon Parade	Sunset Drive	Brown Road	Carrickalinga	Concrete	235	5	4	\$29,662
	11 Surf Avenue	Elixabeth Crescent	Gold Coast Drive	Carrickalinga	Concrete	70	5	4	\$8,803
	10 Elizabeth Crescent	Seaspray Avenue	Surf Avenue	Carrickalinga	Concrete	165	5	4	\$20,835
	8 Seaspray Avenue	Elizabeth Crescent	Gold Coast Drive	Carrickalinga	Concrete	64	5	4	\$8,106
FP-R-0200003	Charles Street	Thomas Street	Main South Road	Yankalilla	hotmix bitumen	65 As New	5	5	\$4,616
FP-R-0204003	Thomas Street	Bungala Street	Charles Street	Yankalilla	Concrete	112 Fair	5	5	\$11,330
FP-R-0233004	Mountain Avenue	Edwards Avenue	Main South Road	Normanville	Concrete	110 Fair	5	4	\$13,898
	32 La Ronde	Red Gum Place	Dolphin Avenue	Carrickalinga	Concrete	39	5	4	\$4,920
	20 Brown Road	Carrickalinga Road	Bennett Street	Carrickalinga	Concrete	256	5	4	\$32,303
E003	Thomas Street	50m West of Bungala Str	40m South of Harrison Cresc	Yankalilla	Concrete	64 As New	5	5	\$6,451
FP-L-0396001	Shiraz Court	Verde Drive	Temp End	Yankalilla	hotmix bitumen	130 As New	5	5	\$9,232
FP-L-0397001	Malbec Close	Verde Drive	End	Myponga	hotmix bitumen	73 As New	5	5	\$5,161
FP-R-0204002	Thomas Street	50m West of Bungala Str	Bungala Street 40m South of Harrison	Yankalilla	hotmix bitumen	56 As New	5	5	\$3,936
FP-R-0204001	Thomas Street	Harrison Crescent (North	Crescent (South)	Yankalilla	hotmix bitumen	102 As New	5	5	\$7,243
FP-L-0395001	Harrison Crescent	Thomas Street	Thomas Street	Yankalilla	hotmix bitumen	195 As New	5	5	\$13,799
FP-R-0371001	Henry Court	Union Road	End	Normanville	hotmix bitumen	123 As New	5	5	\$8,694
FP-R-0375002	Sophia Court	End	End	Normanville	hotmix bitumen	132 As New	5	5	\$9,339
FP-R-0233002	Mountain Avenue	Clarke Street	Sea Court	Normanville	hotmix bitumen	136 Minor Deterioration	5	5	\$9,643
FP-R-0235001	Clarke Street	Mountain Avenue	Banksia Court	Normanville	hotmix bitumen	150 Minor Deterioration	5	5	\$10,627
FP-R-0212002	Glebe Avenue	Barton Street	Mark Place	Yankalilla	hotmix bitumen	170 Minor Deterioration	5	5	\$12,057
FP-R-0369001	Magor Close	Hunt Drive	End	Normanville	hotmix bitumen	171 Minor Deterioration	5	5	\$12,071
FP-R-0220004	Hunt Drive	Anna Court	Mitchell Heights Drive	Normanville	hotmix bitumen	90 As New	5	5	\$6,393
FP-R-0266001	Troon Drive	Turnberry Drive	End West	Normanville	hotmix bitumen	229 As New	5	5	\$16,234
FP-L-0214001	Manisty Drive	Main South Road	Barton Street	Yankalilla	hotmix bitumen	186 As New	5	5	\$13,162
FP-L-0377001	Ulonga Court	Hobart Road	End	Normanville	hotmix bitumen	230 Minor Deterioration	5	5	\$16,312
FP-L-0375001	Sophia Court	Nereus Drive	Sophia Court	Normanville	hotmix bitumen	63 As New	5	5	\$4,489
FP-L-0267002	Shakeshaft Drive	Marrata Street	Parrumba Drive	Normanville	hotmix bitumen	139 As New	5	5	\$9,820
FP-L-0235001	Clarke Street	Mountain Avenue	Banksia Court	Normanville	hotmix bitumen	153 Minor Deterioration	5	5	\$10,847
FP-L-0212002	Glebe Avenue	Barton Street	Mark Place	Yankalilla	hotmix bitumen	113 Fair	5	5	\$7,965
FP-L-0362001	Dune Court	Ronald Street	End	Normanville	hotmix bitumen	162 Minor Deterioration	5	5	\$11,434
FP-L-0368002	Johnston Court	Hunt Drive	End	Normanville	hotmix bitumen	208 Minor Deterioration	5	5	\$14,719
FP-L-0370001	Anna Court	Hunt Drive	End	Normanville	hotmix bitumen	291 As New	5	5	\$20,589
FP-R-0210001	Graham Street	Main Street	End	Yankalilla	Concrete	134 Minor Deterioration	5	5	\$13,507
FP-L-0209001	Malakoff Street	Main Street	End	Yankalilla	Concrete	257 Poor	5	5	\$25,926
FP-L-0205001	Arthur Street	Main Street	Mary Street	Yankalilla	Concrete	258 Poor	5	5	\$26,016
FP-R-0202001	Barunga Street	Symonds Street	End	Yankalilla	Concrete	136 Replace or Renew	5	5	\$13,658
	108 Eatts Street	Main South Road	End	Myponga	Concrete	300	5	5	\$30,207
	102 Michael Street	Main Street	End	Yankalilla	Concrete	191	5	5	\$19,278
	101 Wallman Street	Main Street	Marry Street	Yankalilla	Concrete	349	5	5	\$35,188
	96 Hewett Close	Seaview Crescent	End	Normanville	Concrete	241	5	5	\$24,330
	95 Seaview Crescent	Hill Street	End	Normanville	Concrete	181	5	5	\$18,262
	92 Panorama Crescent	Willson Drive	Hill Street	Normanville	Concrete	106	5	5	\$10,713
	91 Willson Drive	Seaview Crescent	Panorama Crescent	Normanville	Concrete	130	5	5	\$13,119
	90 Seaview Crescent	Willson Drive	Hastings Road	Normanville	Concrete	232	5	5	\$23,377
	89 Willson Drive	Robert Norman Street	Seaview Crescent	Normanville	Concrete	145	5	4	\$18,222
	87 Robert Norman Street	Hastings Street	Willson Drive	Normanville	Concrete	210	5	5	\$21,128
	83 Brook Place	Norman Avenue	End	Normanville	Concrete	371	5	5	\$37,404

	77 Barton Crescent	Burnard Street	End	Normanville	Concrete	192		5	5	\$19,308
	76 Burnard Street	Carrickalinga Road	Barton Crescent	Normanville	Concrete	53		5	5	\$5,296
	68 O'Connor Street	Ronald Street	Jetty Road	Normanville	Concrete	127		5	5	\$12,798
	66 Ronald Street	Marjory Street	O'Connor Street	Normanville	Concrete	124		5	5	\$12,505
	64 Ronald Street	Marjory Street	Croser Street	Normanville	Concrete	134		5	5	\$13,494
	62 Croser Street	Jetty Road	Ronald Street	Normanville	Concrete	128		5	5	\$12,860
	61 Stacey Drive	James Drive	End	Carrickalinga	Concrete	251		5	5	\$25,318
	60 Stacey Drive	James Drive	End	Carrickalinga	Concrete	216		5	5	\$21,821
	57 Dorset Court	James Drive	End	Carrickalinga	Concrete	222		5	5	\$22,345
	56 Merino Avenue	James Drive	End	Carrickalinga	Concrete	170		5	5	\$17,151
	52 Shakeshaft Drive	Marto Court	The Sands	Carrickalinga	Concrete	80		5	5	\$8,047
	51 Shakeshaft Drive	Parrumba Drive	Marto Court	Carrickalinga	Concrete	117		5	5	\$11,772
	48 Marine Court	Lewis Road	End	Carrickalinga	Concrete	250		5	5	\$25,199
	37 Tuna Crescent	Lyddon Road	Lewis Road	Carrickalinga	Concrete	192		5	5	\$19,332
	33 La Ronde	Dolphin Avenue	Lyddon Road	Carrickalinga	Concrete	323		5	5	\$32,605
	31 Red Gum Place	La Ronde	Riverview Drive	Carrickalinga	Concrete	83		5	4	\$10,405
	131 St Andrews Boulevard	Huntingdale Drive	Augusta Court	Normanville	Concrete	207		5	5	\$20,866
	27 La Ronde	Lyddon Road	Berrima Place	Carrickalinga	Concrete	218		5	5	\$21,970
	25 Sunset Drive	Taronga Crescent	Broadbeach Drive	Carrickalinga	Concrete	95		5	5	\$9,588
	24 Taronga Crescent	Sunset Drive	Broadbeach Drive	Carrickalinga	Concrete	219		5	5	\$22,106
	23 Sunset Drive	Horizon Parade	Broadbeach Drive	Carrickalinga	Concrete	173		5	5	\$17,460
	7 Elizabeth Crescent	Gold Coast Drive	Seaspray Avenue	Carrickalinga	Concrete	273		5	4	\$34,436
	5 Amber Grove	Hutchinson Street	End	Myponga	Concrete	179		5	5	\$18,060
FP-L-0365004	Turnberry Drive	Troon Drive	End	Normanville	hotmix bitumen	114	As New	6	5	\$8,057
FP-R-0213001	Mark Place	Glebe Avenue	End	Yankalilla	hotmix bitumen	96	Fair	6	5	\$6,811
FP-R-0212003	Glebe Avenue	Mark Place	End	Yankalilla	hotmix bitumen	38	Minor Deterioration	6	5	\$2,662
FP-R-0410001	Meridian Circuit	Navigation Drive	Temp End		0 hotmix bitumen	265	As New	6	5	\$18,762
FP-R-0409001	Longview Court	Navigation Drive	End at Cul-de-sac		0 hotmix bitumen	100	As New	6	5	\$7,045
FP-R-0408001	Navigation Drive	Hayflat Road	Meridian Circuit		0 hotmix bitumen	118	As New	6	5	\$8,326
FP-R-0406002	Mudlark Way	Temp End	Shiraz Court	Myponga	hotmix bitumen	77	As New	6	5	\$5,466
FP-R-0406001	Mudlark Way	Verde Drive	Temp End	Myponga	hotmix bitumen	64	As New	6	5	\$4,531
FP-L-0396002	Shiraz Court	Temp End	Mudlark Way	Yankalilla	hotmix bitumen	21	As New	6	5	\$1,515
FP-R-0366001	Cherry Hills Crescent	Turnberry Drive	End	Normanville	hotmix bitumen	332	As New	6	5	\$23,506
FP-R-0376001	Defiance Court	Hobart Street	End	Normanville	hotmix bitumen	103	As New	6	5	\$7,285
FP-R-0233001	Mountain Avenue	Cul-de-sac	Clarke Street	Normanville	hotmix bitumen	76	Minor Deterioration	6	5	\$5,402
FP-R-0234001	Sea Court	Mountain Avenue	End	Normanville	hotmix bitumen	68	Minor Deterioration	6	5	\$4,829
FP-R-0236002	Banksia Court	Clarke Street	End	Normanville	hotmix bitumen	66	Minor Deterioration	6	5	\$4,687
FP-R-0236001	Banksia Court	Cul-de-sac	Clarke Street	Normanville	hotmix bitumen	81	Minor Deterioration	6	5	\$5,749
FP-R-0222001	Lovelock Close	Main South Road	End	Normanville	hotmix bitumen	105	Minor Deterioration	6	5	\$7,455
FP-R-0215001	Barton Street	Start	Manisty Drive	Yankalilla	hotmix bitumen	50	As New	6	5	\$3,554
FP-R-0367001	Birkdale Street	Turnberry Drive	End	Normanville	hotmix bitumen	409	As New	6	5	\$28,929
FP-L-0261002	Union Road	End Stage 1	Temp End	Normanville	hotmix bitumen	118	As New	6	5	\$8,361
FP-L-0389001	Admella Avenue	Union Road	Temp End	Normanville	hotmix bitumen	31	As New	6	5	\$2,166
FP-L-0372001	Cenataur Road	Union Road	End	Normanville	hotmix bitumen	39	As New	6	5	\$2,782
FP-L-0296001	Bennett Court	Bennett Street	End	Carrickalinga	hotmix bitumen	52	Minor Deterioration	6	5	\$3,653
FP-L-0234001	Sea Court	Mountain Avenue	End	Normanville	hotmix bitumen	59	Minor Deterioration	6	5	\$4,184
FP-L-0233001	Mountain Avenue	Cul-de-sac	Clarke Street	Normanville	hotmix bitumen	77	Minor Deterioration	6	5	\$5,466
FP-L-0236002	Banksia Court	Clarke Street	End	Normanville	hotmix bitumen	53	Fair	6	5	\$3,774
FP-L-0236001	Banksia Court	Cul-de-sac	Clarke Street	Normanville	hotmix bitumen	76	Fair	6	5	\$5,374
FP-L-0222001	Lovelock Close	Main South Road	End	Normanville	hotmix bitumen	107	Minor Deterioration	6	5	\$7,576

FP-L-0213001	Mark Place	Glebe Avenue	End	Yankalilla	hotmix bitumen	90 Minor Deterioration	6	5	\$6,344
FP-L-0212003	Glebe Avenue	Mark Place	End	Yankalilla	hotmix bitumen	46 Minor Deterioration	6	5	\$3,285
FP-L-0221002	Mitchell Heights Drive	Hunt Drive	Mitchell Heights Drive	Normanville	hotmix bitumen	78 Minor Deterioration	6	5	\$5,529
FP-L-0221003	Mitchell Heights Drive	Mitchell Heights Drive	End	Normanville	hotmix bitumen	24 Minor Deterioration	6	5	\$1,678
FP-L-0221001	Mitchell Heights Drive	Start	Hunt Drive	Normanville	hotmix bitumen	175 Minor Deterioration	6	5	\$12,376
FP-R-0240001	Olive Avenue	Mary Avenue	End	Normanville	Concrete	61 Fair	6	5	\$6,189
FP-L-0240001	Olive Avenue	Mary Avenue	End	Normanville	Concrete	78 Fair	6	5	\$7,893
	113 Hutchinson Street	Amber Grove	End	Myponga	Concrete	216	6	5	\$21,776
	100 Marry Street	Wallman Street	End	Yankalilla	Concrete	78	6	5	\$7,842
	97 Willson Drive	Bower Road	160m East of Panorama Cre:	Normanville	Concrete	178	6	5	\$17,936
	93 Panorama Crescent	Hill Street	End	Normanville	Concrete	105	6	5	\$10,611
	84 Scott Close	Brook Place	End	Normanville	Concrete	129	6	5	\$13,040
	63 Dunstall Road	Ronald Street	Croser Street	Normanville	Concrete	117	6	5	\$11,754
	34 Lyddon Place	La Ronde	End	Carrickalinga	Concrete	49	6	5	\$4,930
	22 Sunset Drive	Horizon Parade	Sunset Drive	Carrickalinga	Concrete	81	6	5	\$8,187
	18 Skyline Close	Horizon parade	End	Carrickalinga	Concrete	52	6	5	\$5,259
	14 View Place	Elizabeth Crescent	End	Carrickalinga	Concrete	107	6	5	\$10,825
	13 View Court	View Place	End	Carrickalinga	Concrete	84	6	5	\$8,516
	9 Surf Avenue	Elizabeth Cresent	End	Carrickalinga	Concrete	103	6	5	\$10,414
	4 Shakeshaft Drive	Marrata Street	End	Carrickalinga	Concrete	37	6	5	\$3,765
	3 The Sands	Shakeshaft Drive	End	Carrickalinga	Concrete	174	6	5	\$17,586
	2 Marto Court	Shakeshaft Drive	End	Carrickalinga	Concrete	62	6	5	\$6,236
	1 Bayvue Close	Horizon Parade	End	Carrickalinga	Concrete	62	6	5	\$6,249
	132 Kingston Heath Court	St Andrews Boulevard	St Andrews Boulard	Normanville	Concrete	67	6	5	\$6,754
	133 Augusta Court	St Andrews Boulevard	End	Normanville	Concrete	71	6	5	\$7,157



Appendix B – Footpath Priority Existing Paths

Footpath_ID	Road_Name	From	To	Township	Footpath_Type	Length	Condition	Priority	Hierarchy	Cost
FP-R-0307003	Carrickalinga Road	Broadbeach Drive	Davey Road	Carrickalinga	concrete	142	Minor Deterioration	1	1	\$35,658
FP-R-0307005	Carrickalinga Road	Guinea Place	Riverview Drive	Carrickalinga	concrete	210	Minor Deterioration	1	1	\$52,895
FP-R-0307006	Carrickalinga Road	Riverview Drive	Caudle Lane	Carrickalinga	concrete	118	Minor Deterioration	1	1	\$29,686
FP-R-0307008	Carrickalinga Road	The Esplanade	Burnard Street	Normanville	concrete	1086	Minor Deterioration	1	1	\$273,697
FP-R-0307007	Carrickalinga Road	Caudle Lane	The Esplanade	Normanville	concrete	374	Fair	1	1	\$94,324
FP-R-0307004	Carrickalinga Road	Davey Road	Guinea Place	Carrickalinga	concrete	113	Minor Deterioration	1	1	\$28,400
FP-R-0307009	Carrickalinga Road	Burnard Street	Ronald Street	Normanville	concrete	82	Minor Deterioration	1	1	\$20,639
FP-L-0252007	Jetty Road	Herbert Street	Carrickalinga Road	Normanville	concrete	104	As New	2	2	\$26,158
FP-L-0252006	Jetty Road	Oconnor Street	Herbert Street	Normanville	concrete	23	As New	2	2	\$5,897
FP-L-0252005	Jetty Road	Field Street	Oconnor Street	Normanville	concrete	58	As New	2	2	\$14,490
FP-L-0252004	Jetty Road	Marjory Street	Field Street	Normanville	concrete	68	As New	2	2	\$17,161
FP-L-0252003	Jetty Road	Kemmis Street	Marjory Street	Normanville	concrete	77	As New	2	2	\$19,303
FP-L-0252002	Jetty Road	Croser Street	Kemmis Street	Normanville	concrete	51	As New	2	2	\$12,877
FP-L-0252001	Jetty Road	Purrumba Street	Croser Street	Normanville	concrete	125	As New	2	2	\$31,525
FP-R-0258001	Jetty Road Carpark Entr.	Jetty Road	Car Park	Normanville	concrete	128	As New	2	2	\$32,332
FP-R-0252007	Jetty Road	Herbert Street	Carrickalinga Road	Normanville	concrete	84	As New	2	2	\$21,118
FP-R-TSA001019	Main South Road	Bethel Road	Jervois Road	Yankalilla	concrete	847	As New	2	1	\$213,545
FP-R-TSA001025	Williss Drive	Main Road	Will Road	Normanville	hotmix bitumen	148	Minor Deterioration	2	3	\$20,914
FP-R-TSA001026	Williss Drive	Will Road	Hobart Road	Normanville	hotmix bitumen	230	Minor Deterioration	2	3	\$32,625
FP-L-TSA001014	Main South Road	Charles Street	Bungalla Street	Yankalilla	concrete	61	As New	2	2	\$15,473
FP-R-0404001	Yankalilla Oval Entrance	Main South Road	Bridge	Yankalilla	concrete	16	As New	2	2	\$3,956
FP-L-0404001	Yankalilla Oval Entrance	Main South Road	Bridge	Yankalilla	concrete	14	As New	2	2	\$3,553
FP-L-TSA001015	Main South Road	Bungala Street	Glebe Avenue	Yankalilla	concrete	545	Minor Deterioration	2	2	\$137,214
FP-R-0306008	Gold Coast Drive	Solitude Drive	Scenic Way	Carrickalinga	concrete	415	Minor Deterioration	2	1	\$104,454
FP-R-0306009	Gold Coast Drive	Scenic Way	Bennett Street	Carrickalinga	concrete	56	Minor Deterioration	2	1	\$14,036
FP-R-TSA001014	Main South Road	Charles Street	Bungala Street	Yankalilla	concrete	114	Fair	2	2	\$28,652
FP-R-TSA001015	Main South Road	Bungala Street	Glebe Avenue	Yankalilla	concrete	514	Minor Deterioration	2	2	\$129,402
FP-R-TSA001004	Main South Road	Number 50	Hanson Street	Myponga	concrete	108	As New	2	2	\$27,216
FP-R-0288004	Broadbeach Drive	Sunset Drive	Carrickalinga Road	Carrickalinga	concrete	122	Minor Deterioration	2	1	\$30,694
FP-R-0288001	Broadbeach Drive	Gold Coast Drive	Sunset Drive	Carrickalinga	concrete	109	As New	2	1	\$27,493
FP-R-0288002	Broadbeach Drive	Sunset Drive	Taronga Crescent	Carrickalinga	concrete	159	As New	2	1	\$40,068
FP-R-0288003	Broadbeach Drive	Taronga Crescent	Sunset Drive	Carrickalinga	concrete	165	Minor Deterioration	2	1	\$41,605
FP-R-0307012	Carrickalinga Road	Edmund Street	Cheesman Street	Normanville	concrete	137	Minor Deterioration	2	2	\$34,574
FP-R-0307013	Carrickalinga Road	Cheesman Street	Main South Road	Normanville	concrete	53	As New	2	2	\$13,356
FP-L-TSA001014	Main South Road	Charles Street	Bugala Street	Yankalilla	concrete	24	Fair	2	2	\$6,098
FP-L-TSA001004	Main South Road	Number 50	Hanson Street	Myponga	concrete	134	As New	2	2	\$33,768
FP-L-0307013	Carrickalinga Road	Cheesman Street	Main South Road	Normanville	concrete	51	Minor Deterioration	2	2	\$12,877
FP-L-0307012	Carrickalinga Road	Edmund Street	Cheesman Street	Normanville	concrete	132	Minor Deterioration	2	2	\$33,264
FP-R-0241001	Andrew Avenue	Carrickalinga Road	Mary Avenue	Normanville	concrete	80	Fair	2	2	\$20,059
FP-L-0241001	Andrew Avenue	Carrickalinga Road	Mary Avenue	Normanville	concrete	110	Fair	2	2	\$27,644
FP-R-TSA001020	Main South Road	Jervois Road	Lovelock Close	Normanville	concrete	322	Fair	2	1	\$81,068
FP-R-TSA001021	Main South Road	Lovelock Close	Norman Avenue	Normanville	concrete	175	Fair	2	1	\$44,176
FP-R-0353001	Hansen Street	Hutchinson Street	Main South Road	Myponga	hotmix bitumen	83	Minor Deterioration	2	3	\$11,696
FP-R-0307010	Carrickalinga Road	Ronald Street	Jetty Road	Normanville	concrete	39	Minor Deterioration	2	2	\$9,904
FP-R-0307011	Carrickalinga Road	Jetty Road	Edmund Street	Normanville	concrete	170	Fair	2	2	\$42,941
FP-L-0307011	Carrickalinga Road	Jetty Road	Edmund Street	Normanville	concrete	159	Minor Deterioration	2	2	\$39,942
FP-L-0307010	Carrickalinga Road	Ronald Street	Jetty Road	Normanville	concrete	74	Minor Deterioration	2	2	\$18,698
FP-R-0242002	Edmund Street	Barton Crescent	End	Normanville	hotmix bitumen	165	Minor Deterioration	3	4	\$14,629
FP-R-0242001	Edmund Street	Carrickalinga Road	Barton Crescent	Normanville	hotmix bitumen	59	Minor Deterioration	3	4	\$5,230

FP-R-0306002	Gold Coast Drive	Elizabeth Crescent	Seaspray Avenue	Carrickalinga	concrete	247	Minor Deterioration	3	1	\$62,269
FP-R-0306003	Gold Coast Drive	Seaspray Avenue	Surf Avenue	Carrickalinga	concrete	209	Minor Deterioration	3	1	\$52,769
FP-R-0306004	Gold Coast Drive	Surf Avenue	Elizabeth Crescent	Carrickalinga	concrete	299	Minor Deterioration	3	1	\$75,323
FP-R-0306006	Gold Coast Drive	Gulf Close	Petrel Close	Carrickalinga	concrete	86	Minor Deterioration	3	1	\$21,773
FP-R-0306007	Gold Coast Drive	Petrel Close	Solitude Drive	Carrickalinga	concrete	77	Minor Deterioration	3	1	\$19,505
FP-R-TSA001016	Main South Road	Gleve Avenue	Manisty Drive	Yankalilla	concrete	291	Minor Deterioration	3	2	\$73,282
FP-R-0306005	Gold Coast Drive	Elizabeth Crescent	Gulf Close	Carrickalinga	concrete	94	Minor Deterioration	3	1	\$23,587
FP-R-0306001	Gold Coast Drive	Start	Elizabeth Crescent	Carrickalinga	concrete	54	Minor Deterioration	3	1	\$13,633
FP-R-TSA001018	Main South Road	Goeorge Drive	Bethel Road	Yankalilla	concrete	316	Minor Deterioration	3	1	\$79,733
FP-R-TSA001017	Main South Road	Manisty Drive	George Drive	Yankalilla	concrete	152	Minor Deterioration	3	2	\$38,203
FP-L-TSA001016	Main South Road	Gleve Avenue	Manisty Drive	Yankalilla	concrete	310	Minor Deterioration	3	2	\$78,019
FP-R-TSA003001	Main Street	Main South Road	Arthur Street	Yankalilla	concrete	22	As New	3	2	\$5,544
FP-R-TSA003001	Main Street	Main South Road	Arthur Street	Yankalilla	concrete	173	Fair	3	2	\$43,672
FP-L-TSA003001	Main Street	Main South Road	Arthur Street	Yankalilla	concrete	173	Minor Deterioration	3	2	\$43,470
FP-L-0238001	Edwards Avenue	Mary Avenue	James Avenue	Normanville	hotmix bitumen	93	Minor Deterioration	3	3	\$13,183
FP-L-0238002	Edwards Avenue	James Avenue	Mountain Avenue	Normanville	hotmix bitumen	94	Minor Deterioration	3	3	\$13,310
FP-R-TSA001024	Main South Road	James Avenue	Main Road	Normanville	concrete	130	Minor Deterioration	3	2	\$32,836
FP-R-0352001	Hutchinson Street	Main South Road	Hansen Street	Myponga	concrete	137	Fair	3	1	\$34,499
FP-R-0405001	Oval Road	Hutchinson Street	Verde Drive	Myponga	hotmix bitumen	56	As New	3	3	\$7,972
FP-R-TSA001023	Main South Road	Mountain Avenue	James Avenue	Normanville	concrete	95	Minor Deterioration	3	2	\$23,965
FP-R-TSA001022	Main South Road	Norman Avenue	Mountain Avenue	Normanville	concrete	112	Fair	3	2	\$28,224
FP-R-0245002	Cheesman Street	Herbert Street	Carrickalinga Road	Normanville	hotmix bitumen	88	Minor Deterioration	3	4	\$7,779
FP-L-0245002	Cheesman Street	Herbert Street	Carrickalinga Road	Normanville	hotmix bitumen	78	Minor Deterioration	3	4	\$6,938
FP-R-TSA003002	Main Street	Arthur Street	Mary Street	Yankalilla	concrete	160	Fair	3	2	\$40,370
FP-L-TSA003002	Main Street	Arthur Street	Mary Street	Yankalilla	concrete	149	Minor Deterioration	3	2	\$37,447
E002	Main South Road	Myponga Market	72 Main South Road	Myponga	concrete	223		4	2	\$56,196
E001	Main South Road	Myponga Market	87 Main South Road	Myponga	concrete	265		4	2	\$66,780
FP-R-0237002	James Avenue	Edwards Avenue	End	Normanville	hotmix bitumen	162	Minor Deterioration	4	4	\$14,310
		75m N of Edwards Avenue								
FP-R-0239002	Mary Avenue	(Rear of Mitre 10)	End	Normanville	hotmix bitumen	77	Minor Deterioration	4	4	\$6,797
FP-L-0237002	James Avenue	Edwards Avenue	End	Normanville	hotmix bitumen	158	Minor Deterioration	4	4	\$13,956
FP-L-0239002	Mary Avenue	Olive Avenue	End	Normanville	hotmix bitumen	135	Minor Deterioration	4	4	\$11,965
SUP-0002	Bungala Park	Footbridge	Horizon Development		0 concrete	112	As New	4	1	\$28,224
SUP-0001	Bungala Park	Main South Road	Footbridge		0 concrete	45	As New	4	1	\$11,340
FP-L-0391002	Verde Drive	70m NE of Green Way	Oval Road	Myponga	hotmix bitumen	158	As New	4	4	\$13,965
FP-L-TSA003004	Main Street	Michael Street	Malakoff Street	Yankalilla	concrete	91	Minor Deterioration	4	2	\$22,856
FP-L-TSA003003	Main Street	Mary Street	Michael Street	Yankalilla	concrete	24	Fair	4	2	\$6,023
E004	Meridian Circuit	Navigation Drive	Bungala Park	Normanville	concrete	350	As New	4	1	\$88,200
FP-L-TSA003005	Main Street	Malakoff Street	McArthur Street	Yankalilla	concrete	165	Minor Deterioration	4	2	\$41,656
FP-R-0212001	Glebe Avenue	Main South Road	Barton Street	Yankalilla	hotmix bitumen	73	Minor Deterioration	5	5	\$5,140
FP-R-0215002	Barton Street	Manisty Drive	Glebe Avenue	Yankalilla	hotmix bitumen	276	Minor Deterioration	5	5	\$19,555
FP-L-0272001	James Drive	Carrickalinga Road	Merino Avenue	Carrickalinga	hotmix bitumen	111	As New	5	4	\$9,806
FP-L-0368001	Johnston Court	Jervois Road	Hunt Drive	Normanville	hotmix bitumen	91	Minor Deterioration	5	4	\$8,045
FP-L-0267009	Shakeshaft Drive	Marrata Street	Carrickalinga Road	Normanville	hotmix bitumen	33	As New	5	4	\$2,876
FP-L-0261001	Union Road	Main South Road	End Stage 1	Normanville	hotmix bitumen	350	As New	5	4	\$30,940
FP-R-0260001	Hobart Road	Main South Road	End	Normanville	hotmix bitumen	239	As New	5	4	\$21,160
FP-L-0391001	Verde Drive	Cul-de-sac	70m NE of Green Way	Myponga	hotmix bitumen	331	As New	5	4	\$29,329
FP-L-0390001	Green Way	Main South Road	Verde Drive	Myponga	hotmix bitumen	77	As New	5	4	\$6,823
FP-R-0365001	Turnberry Drive	St Andrews Boulevard	Cherry Hills Crescent	Normanville	hotmix bitumen	172	As New	5	4	\$15,195
FP-R-0374001	Nereus Drive	Union Road	Hobart Road	Normanville	hotmix bitumen	172	As New	5	5	\$12,192

FP-R-0268001	Marrata Street	Shakeshaft Drive	Shakeshaft Drive	Normanville	hotmix bitumen	304 As New	5	5	\$21,488
FP-R-0233003	Mountain Avenue	Sea Court	Edwards Avenue	Normanville	hotmix bitumen	214 Fair	5	5	\$15,123
FP-R-0220003	Hunt Drive	The Way	Anna Court	Normanville	hotmix bitumen	62 As New	5	5	\$4,361
FP-R-0220002	Hunt Drive	Magor Close	The Way	Normanville	hotmix bitumen	94 As New	5	4	\$8,292
FP-R-0220001	Hunt Drive	Johnston Court	Magor Close	Normanville	hotmix bitumen	82 As New	5	4	\$7,257
FP-R-0365002	Turnberry Drive	Cherry Hills Crescent	Birkdale Street	Normanville	hotmix bitumen	125 As New	5	4	\$11,071
FP-R-0365003	Turnberry Drive	Birkdale Street	Troon Drive	Normanville	hotmix bitumen	84 As New	5	4	\$7,390
FP-L-0269001	Parrumba Drive	Shakeshaft Drive	Shakeshaft Drive	Normanville	hotmix bitumen	219 As New	5	5	\$15,491
FP-L-0373001	Resolute Avenue	Union Road	Hobart Road	Normanville	hotmix bitumen	264 As New	5	5	\$18,663
FP-L-0233002	Mountain Avenue	Clarke Street	Sea Court	Normanville	hotmix bitumen	119 Minor Deterioration	5	5	\$8,432
FP-L-0233003	Mountain Avenue	Sea Court	Edwards Avenue	Normanville	hotmix bitumen	213 Fair	5	5	\$15,066
FP-L-0219001	The Way	Jervois Road	Hunt Drive	Normanville	hotmix bitumen	83 Minor Deterioration	5	5	\$5,905
FP-L-0263001	Huntingdale Drive	St Andrews Boulevard	End	Normanville	hotmix bitumen	526 As New	5	5	\$37,205
FP-R-0200003	Charles Street	Thomas Street	Main South Road	Yankalilla	hotmix bitumen	65 As New	5	5	\$4,616
E003	Thomas Street	50m West of Bungala Street	40m South of Harrison Crescent	Yankalilla	hotmix bitumen	64 As New	5	5	\$4,531
FP-L-0396001	Shiraz Court	Verde Drive	Temp End	Yankalilla	hotmix bitumen	130 As New	5	5	\$9,232
FP-L-0397001	Malbec Close	Verde Drive	End	Myponga	hotmix bitumen	73 As New	5	5	\$5,161
FP-R-0204002	Thomas Street	50m West of Bungala Street	Bungala Street	Yankalilla	hotmix bitumen	56 As New	5	5	\$3,936
FP-R-0204001	Thomas Street	Harrison Crescent (North)	40m South of Harrison Crescent	Yankalilla	hotmix bitumen	102 As New	5	5	\$7,243
FP-L-0395001	Harrison Crescent	Thomas Street	Thomas Street	Yankalilla	hotmix bitumen	195 As New	5	5	\$13,799
FP-R-0371001	Henry Court	Union Road	End	Normanville	hotmix bitumen	123 As New	5	5	\$8,694
FP-R-0375002	Sophia Court	End	End	Normanville	hotmix bitumen	132 As New	5	5	\$9,339
FP-R-0233002	Mountain Avenue	Clarke Street	Sea Court	Normanville	hotmix bitumen	136 Minor Deterioration	5	5	\$9,643
FP-R-0235001	Clarke Street	Mountain Avenue	Banksia Court	Normanville	hotmix bitumen	150 Minor Deterioration	5	5	\$10,627
FP-R-0212002	Glebe Avenue	Barton Street	Mark Place	Yankalilla	hotmix bitumen	170 Minor Deterioration	5	5	\$12,057
FP-R-0369001	Magor Close	Hunt Drive	End	Normanville	hotmix bitumen	171 Minor Deterioration	5	5	\$12,071
FP-R-0220004	Hunt Drive	Anna Court	Mitchell Heights Drive	Normanville	hotmix bitumen	90 As New	5	5	\$6,393
FP-R-0266001	Troon Drive	Turnberry Drive	End West	Normanville	hotmix bitumen	229 As New	5	5	\$16,234
FP-L-0214001	Manisty Drive	Main South Road	Barton Street	Yankalilla	hotmix bitumen	186 As New	5	5	\$13,162
FP-L-0377001	Ulonga Court	Hobart Road	End	Normanville	hotmix bitumen	230 Minor Deterioration	5	5	\$16,312
FP-L-0375001	Sophia Court	Nereus Drive	Sophia Court	Normanville	hotmix bitumen	63 As New	5	5	\$4,489
FP-L-0267002	Shakeshaft Drive	Marrata Street	Parrumba Drive	Normanville	hotmix bitumen	139 As New	5	5	\$9,820
FP-L-0235001	Clarke Street	Mountain Avenue	Banksia Court	Normanville	hotmix bitumen	153 Minor Deterioration	5	5	\$10,847
FP-L-0212002	Glebe Avenue	Barton Street	Mark Place	Yankalilla	hotmix bitumen	113 Fair	5	5	\$7,965
FP-L-0362001	Dune Court	Ronald Street	End	Normanville	hotmix bitumen	162 Minor Deterioration	5	5	\$11,434
FP-L-0368002	Johnston Court	Hunt Drive	End	Normanville	hotmix bitumen	208 Minor Deterioration	5	5	\$14,719
FP-L-0370001	Anna Court	Hunt Drive	End	Normanville	hotmix bitumen	291 As New	5	5	\$20,589
FP-L-0365004	Turnberry Drive	Troon Drive	End	Normanville	hotmix bitumen	114 As New	6	5	\$8,057
FP-R-0213001	Mark Place	Glebe Avenue	End	Yankalilla	hotmix bitumen	96 Fair	6	5	\$6,811
FP-R-0212003	Glebe Avenue	Mark Place	End	Yankalilla	hotmix bitumen	38 Minor Deterioration	6	5	\$2,662
FP-R-0410001	Meridian Circuit	Navigation Drive	Temp End		0 hotmix bitumen	265 As New	6	5	\$18,762
FP-R-0409001	Longview Court	Navigation Drive	End at Cul-de-sac		0 hotmix bitumen	100 As New	6	5	\$7,045
FP-R-0408001	Navigation Drive	Hayflat Road	Meridian Circuit		0 hotmix bitumen	118 As New	6	5	\$8,326
FP-R-0406002	Mudlark Way	Temp End	Shiraz Court	Myponga	hotmix bitumen	77 As New	6	5	\$5,466
FP-R-0406001	Mudlark Way	Verde Drive	Temp End	Myponga	hotmix bitumen	64 As New	6	5	\$4,531
FP-L-0396002	Shiraz Court	Temp End	Mudlark Way	Yankalilla	hotmix bitumen	21 As New	6	5	\$1,515
FP-R-0366001	Cherry Hills Crescent	Turnberry Drive	End	Normanville	hotmix bitumen	332 As New	6	5	\$23,506
FP-R-0376001	Defiance Court	Hobart Street	End	Normanville	hotmix bitumen	103 As New	6	5	\$7,285
FP-R-0233001	Mountain Avenue	Cul-de-sac	Clarke Street	Normanville	hotmix bitumen	76 Minor Deterioration	6	5	\$5,402
FP-R-0234001	Sea Court	Mountain Avenue	End	Normanville	hotmix bitumen	68 Minor Deterioration	6	5	\$4,829

FP-R-0236002	Banksia Court	Clarke Street	End	Normanville	hotmix bitumen	66 Minor Deterioration	6	5	\$4,687
FP-R-0236001	Banksia Court	Cul-de-sac	Clarke Street	Normanville	hotmix bitumen	81 Minor Deterioration	6	5	\$5,749
FP-R-0222001	Lovelock Close	Main South Road	End	Normanville	hotmix bitumen	105 Minor Deterioration	6	5	\$7,455
FP-R-0215001	Barton Street	Start	Manisty Drive	Yankalilla	hotmix bitumen	50 As New	6	5	\$3,554
FP-R-0367001	Birkdale Street	Turnberry Drive	End	Normanville	hotmix bitumen	409 As New	6	5	\$28,929
FP-L-0261002	Union Road	End Stage 1	Temp End	Normanville	hotmix bitumen	118 As New	6	5	\$8,361
FP-L-0389001	Admella Avenue	Union Road	Temp End	Normanville	hotmix bitumen	31 As New	6	5	\$2,166
FP-L-0372001	Cenataur Road	Union Road	End	Normanville	hotmix bitumen	39 As New	6	5	\$2,782
FP-L-0296001	Bennett Court	Bennett Street	End	Carrickalinga	hotmix bitumen	52 Minor Deterioration	6	5	\$3,653
FP-L-0234001	Sea Court	Mountain Avenue	End	Normanville	hotmix bitumen	59 Minor Deterioration	6	5	\$4,184
FP-L-0233001	Mountain Avenue	Cul-de-sac	Clarke Street	Normanville	hotmix bitumen	77 Minor Deterioration	6	5	\$5,466
FP-L-0236002	Banksia Court	Clarke Street	End	Normanville	hotmix bitumen	53 Fair	6	5	\$3,774
FP-L-0236001	Banksia Court	Cul-de-sac	Clarke Street	Normanville	hotmix bitumen	76 Fair	6	5	\$5,374
FP-L-0222001	Lovelock Close	Main South Road	End	Normanville	hotmix bitumen	107 Minor Deterioration	6	5	\$7,576
FP-L-0213001	Mark Place	Glebe Avenue	End	Yankalilla	hotmix bitumen	90 Minor Deterioration	6	5	\$6,344
FP-L-0212003	Glebe Avenue	Mark Place	End	Yankalilla	hotmix bitumen	46 Minor Deterioration	6	5	\$3,285
FP-L-0221002	Mitchell Heights Drive	Hunt Drive	Mitchell Heights Drive	Normanville	hotmix bitumen	78 Minor Deterioration	6	5	\$5,529
FP-L-0221003	Mitchell Heights Drive	Mitchell Heights Drive	End	Normanville	hotmix bitumen	24 Minor Deterioration	6	5	\$1,678
FP-L-0221001	Mitchell Heights Drive	Start	Hunt Drive	Normanville	hotmix bitumen	175 Minor Deterioration	6	5	\$12,376



Appendix C – Footpath Priority Proposed Paths

Footpath_ID	Road_Name	From	To	Township	Footpath_Type	Length	Condition	Priority	Hierarchy	Cost
FP-L-0258001	Jetty Road Carpark Entrance	Jetty Road	Car Park	Normanville	Concrete	133	Minor Deterioration	2	2	\$33,541
118	Jetty Road	Kemmiss Hill Street	Car Park Entrance	Normanville	Concrete	187		2	2	\$47,138
117	Jetty Road	Heathcote Street	Kemmiss Hill Street	Normanville	Concrete	71		2	2	\$17,857
116	Jetty Road	Field Street	Heathcote Street	Normanville	Concrete	53		2	2	\$13,454
115	Jetty Road	Herbert Street	Field Street	Normanville	Concrete	90		2	2	\$22,788
FP-L-TSA001019	Main South Road	Bethel Road	(Childrens Centre Driveway)	Yankalilla	Concrete	338	Fair	2	1	\$85,176
104	St Andrews Boulevard	Huntingdale Drive	Williss Drive	Normanville	Concrete	858		2	3	\$173,012
122	Williss Drive	St Andrews Boulevard	Beachside Holiday Park	Normanville	Concrete	319		2	2	\$80,388
105	Williss Drive	St Andrews Boulevard	Union Road	Normanville	Concrete	695		2	2	\$175,088
79	Williss Drive	Hobart Road	Union Road	Normanville	Concrete	337		2	2	\$84,842
50	Gold Coast Drive	Lewis Road	Lyddon Road	Carrickalinga	Concrete	500		3	3	\$100,846
41	Gold Coast Drive	Lyddon Road	Lewis Road	Carrickalinga	Concrete	434		3	3	\$87,452
121	Main South Road	Eatts Street	Hansen Street	Myponga	Concrete	169		3	2	\$42,667
114	Main South Road	Hutchinson Street	Hansen Street	Myponga	Concrete	121		3	2	\$30,576
123	Edwards Avenue	Mountain Avenue	Norman Avenue	Normanville	Concrete	86		3	3	\$17,338
80	Edwards Avenue	Mountain Avenue	Norman Avenue	Normanville	Concrete	86		3	3	\$17,335
FP-L-TSA001018	Main South Road	George Drive	Bethel Road	Yankalilla	Concrete	303	Fair	3	1	\$76,432
FP-L-TSA001017	Main South Road	Manisty Drive	George Drive	Yankalilla	Concrete	193	Minor Deterioration	3	2	\$48,510
112	Hutchinson Street	Stephens Road	Amber Grove	Myponga	Concrete	110		3	4	\$13,807
110	Stephens Road	Hutchinson Street	Oval Entrance	Myponga	Concrete	238		3	4	\$29,930
109	Hutchinson Street	Hansen Street	Stephens Road	Myponga	Concrete	102		3	1	\$25,766
FP-R-0238001	Edwards Avenue	Mary Avenue	James Avenue	Normanville	Concrete	102	Fair	3	3	\$20,624
FP-R-0238002	Edwards Avenue	James Avenue	Mountain Avenue	Normanville	Concrete	92	Minor Deterioration	3	3	\$18,547
120	Main South Road	Green Way	Eatts Street	Myponga	Concrete	158		3	2	\$39,797
107	Main South Road	Green Way	Hutchinson Street	Myponga	Concrete	165		3	2	\$41,599
45	Lyddon Road	Gold Coast Drive	Lewis Road	Carrickalinga	Concrete	85		3	4	\$10,764
44	Lewis Road	Lyddon Road	Lyddon Road	Carrickalinga	Concrete	40		3	4	\$5,000
73	Cheesman Street	Field Street	Herbert Street	Normanville	Concrete	97		3	4	\$12,194
36	Lyddon Road	Tuna Crescent	Lewis Road	Carrickalinga	Concrete	71		3	4	\$9,004
35	Lyddon Road	La Ronde	Tuna Crescent	Carrickalinga	Concrete	79		3	4	\$9,969
55	Forktree Road	Brown Road	Forktree Brewing	Carrickalinga	Concrete	1248		4	2	\$314,485
54	Carrickalinga Road	Broadbeach Drive	Brown Road	Carrickalinga	Concrete	400		4	2	\$100,892
111	Stephens Street	Oval Entrance	160m South of Oval Entrance	Myponga	Concrete	171		4	4	\$21,524
74	Herbert Street	Jetty Road	Cheesman Street	Normanville	Concrete	305		4	4	\$38,393
72	Field Street	Jetty Road	Cheesman Street	Normanville	Concrete	333		4	4	\$41,919
71	Heathcote Street	Kemmiss Hill Street	Field Street	Normanville	Concrete	347		4	4	\$43,756
49	Lewis Road	Gold Coast Drive	Marine Court	Carrickalinga	Concrete	226		4	4	\$28,485
47	Lewis Road	Marine Court	Tuna Crescent	Carrickalinga	Concrete	94		4	4	\$11,818
46	Lewis road	Lyddon Road	Tuna Crescent	Carrickalinga	Concrete	101		4	4	\$12,737
43	Lewis Road	Dolphin Avenue	Lyddon Road	Carrickalinga	Concrete	93		4	4	\$11,690
42	Lewis Road	Dolphin Avenue	Riverview Drive	Carrickalinga	Concrete	181		4	4	\$22,799
40	Riverview Drive	Red Gum Place	Lewis Road	Carrickalinga	Concrete	375		4	3	\$75,633
38	Dolphin Avenue	Lewis Road	La Ronde	Carrickalinga	Concrete	367		4	4	\$46,199
81	Norman Avenue	Main South Road	Katherine Drive	Normanville	Concrete	148		4	4	\$18,605
129	Main Street	McArthur Street	Graham Street	Yankalilla	Concrete	140		4	2	\$35,280
103	Main Street	McArthur Street	Graham Street	Yankalilla	Concrete	140		4	2	\$35,366
70	Heathcote Street	Jetty Road	Kemmiss Hill Street	Normanville	Concrete	81		4	4	\$10,253
69	Kemmiss Hill Street	Jetty Road	Heathcote Street	Normanville	Concrete	123		4	4	\$15,519

	16 Solitude Drive	Gold Coast Drive	Bennett Street	Carrickalinga	Concrete	427		4	4	\$53,810
FP-L-0048001	Jervois Road	Johnston Court	The Way	Yankalilla	Concrete	166	Fair	4	3	\$33,466
FP-L-0048002	Jervois Road	The Way	Bower Road	Yankalilla	Concrete	130	Fair	4	3	\$26,148
FP-L-0048001	Jervois Road	Main South Road	Johnston Court	Yankalilla	Concrete	85	Fair	4	3	\$17,136
	17 Bennett Street	Broadbeach Drive	Brown Road	Carrickalinga	Concrete	448		4	4	\$56,500
	127 Main Street	Michael Street	Malakoff Street	Yankalilla	Concrete	91		4	2	\$22,932
	126 Main Street	Mary Street	Michael Street	Yankalilla	Concrete	24		4	2	\$6,048
FP-R-0201001	Bungala Street	Main South Road	Thomas Street	Yankalilla	Concrete	74	Minor Deterioration	4	4	\$9,374
FP-L-0239001	Mary Avenue	Edwards Avenue	Olive Avenue	Normanville	Concrete	17	As New	4	4	\$2,117
	39 Riverview Drive	Carrickalinga Road	Red Gum Place	Carrickalinga	Concrete	111		4	3	\$22,334
	6 Hansen Street	Main South Road	End	Myponga	Concrete	152		4	4	\$19,203
FP-L-0232002	Norman Avenue	Hastings Street	Brook Place	Normanville	Concrete	266	Fair	4	4	\$33,478
FP-L-0232003	Norman Avenue	Brook Place	Katherine Drive	Normanville	Concrete	442	Fair	4	4	\$55,692
	119 Main South Road	200m South of Green Way	Green Way	Myponga	Concrete	239		4	2	\$60,239
	106 Main South Road	200m South of Green Way	Green Way	Myponga	Concrete	231		4	2	\$58,143
	65 Marjory Street	Jertty Road	Ronald Street	Normanville	Concrete	130		4	5	\$13,132
	128 Main Street	Malakoff Street	McArthur Street	Yankalilla	Concrete	165		4	2	\$41,580
	75 Barton Crescent	Edmund Street	Burnard Street	Normanville	Concrete	247		4	5	\$24,878
	88 Hastings Street	Robert Norman Street	Seaview Crescent	Normanville	Concrete	229		5	4	\$28,816
	86 Hastinga Street	Norman Avenue	Robert Norman Street	Normanville	Concrete	172		5	4	\$21,715
	21 Sunset Drive	Horizon Parade	Broadbeach Drive	Carrickalinga	Concrete	248		5	4	\$31,255
	130 Main South Road	Hay Flat Road	Jervois Road	Normanville	Concrete	502		5	1	\$126,504
	125 The Vines Drive	Main South Road	End	Normanville	Concrete	309		5	5	\$31,147
	124 Main South Road	Beachside Holiday Park	The Vines Drive	Normanville	Concrete	537		5	3	\$108,259
	78 James Avenue	Edwards Avenue	Main South Road	Normanville	Concrete	86		5	4	\$10,891
	58 James Drive	Merino Avenue	Dorset Court	Carrickalinga	Concrete	95		5	4	\$11,990
	15 Elizabeth Crescent	View Place	Gold Coast Drive	Carrickalinga	Concrete	213		5	4	\$26,854
	12 Elizabeth Crescent	Surf Avenue	View Place	Carrickalinga	Concrete	218		5	4	\$27,514
	98 Hay Flat Road	Main South Road	Navigation Drive	Normanville	Concrete	350		5	4	\$44,144
	94 Hill Street	Panorama Crescent	Seaview Crescent	Normanville	Concrete	127		5	4	\$16,019
	30 La Ronde	Guinea Place	Red Gum Place	Carrickalinga	Concrete	199		5	4	\$25,102
	29 Guinea Place	La Ronde	Carrickalinga Road	Carrickalinga	Concrete	78		5	4	\$9,779
	28 La Ronde	Berrima Palce	Guinea Place	Carrickalinga	Concrete	300		5	4	\$37,853
	26 Berrima Place	Broadbeach Drive	La Ronde	Carrickalinga	Concrete	82		5	4	\$10,375
	99 Bungala Street	Symonds Street	Thomas Street	Yankalilla	Concrete	39		5	5	\$3,959
FP-L-0206001	Mary Street	Main Street	Arthur Street	Yankalilla	Concrete	82	Fair	5	5	\$8,215
	85 Norman Avenue	Hastings Street	Robert Norman Street	Normanville	Concrete	407		5	4	\$51,219
	82 Katherine Drive	Norman Avenue	End	Normanville	Concrete	647		5	5	\$65,174
	67 Ronald Street	O'Connor Street	Carrickalinga Street	Normanville	Concrete	176		5	5	\$17,784
	59 James Drive	Dorset Court	Stacey Drive	Carrickalinga	Concrete	93		5	4	\$11,683
	53 Shakeshaft Drive	The Sands	Parrumba Drive	Carrickalinga	Concrete	45		5	5	\$4,531
	19 Horizon Parade	Sunset Drive	Brown Road	Carrickalinga	Concrete	235		5	4	\$29,662
	11 Surf Avenue	Elixabeth Crescent	Gold Coast Drive	Carrickalinga	Concrete	70		5	4	\$8,803
	10 Elizabeth Crescent	Seaspray Avenue	Surf Avenue	Carrickalinga	Concrete	165		5	4	\$20,835
	8 Seaspray Avenue	Elizabeth Crescent	Gold Coast Drive	Carrickalinga	Concrete	64		5	4	\$8,106
FP-R-0204003	Thomas Street	Bungala Street	Charles Street	Yankalilla	Concrete	112	Fair	5	5	\$11,330
FP-R-0233004	Mountain Avenue	Edwards Avenue	Main South Road	Normanville	Concrete	110	Fair	5	4	\$13,898
	32 La Ronde	Red Gum Place	Dolphin Avenue	Carrickalinga	Concrete	39		5	4	\$4,920
	20 Brown Road	Carrickalinga Road	Bennett Street	Carrickalinga	Concrete	256		5	4	\$32,303
FP-R-0210001	Graham Street	Main Street	End	Yankalilla	Concrete	134	Minor Deterioration	5	5	\$13,507

FP-L-0209001	Malakoff Street	Main Street	End	Yankalilla	Concrete	257	Poor	5	5	\$25,926
FP-L-0205001	Arthur Street	Main Street	Mary Street	Yankalilla	Concrete	258	Poor	5	5	\$26,016
FP-R-0202001	Barunga Street	Symonds Street	End	Yankalilla	Concrete	136	Replace or Renew	5	5	\$13,658
	108 Eatts Street	Main South Road	End	Myponga	Concrete	300		5	5	\$30,207
	102 Michael Street	Main Street	End	Yankalilla	Concrete	191		5	5	\$19,278
	101 Wallman Street	Main Street	Marry Street	Yankalilla	Concrete	349		5	5	\$35,188
	96 Hewett Close	Seaview Crescent	End	Normanville	Concrete	241		5	5	\$24,330
	95 Seaview Crescent	Hill Street	End	Normanville	Concrete	181		5	5	\$18,262
	92 Panorama Crescent	Willson Drive	Hill Street	Normanville	Concrete	106		5	5	\$10,713
	91 Willson Drive	Seaview Crescent	Panorama Crescent	Normanville	Concrete	130		5	5	\$13,119
	90 Seaview Crescent	Willson Drive	Hastings Road	Normanville	Concrete	232		5	5	\$23,377
	89 Willson Drive	Robert Norman Street	Seaview Crescent	Normanville	Concrete	145		5	4	\$18,222
	87 Robert Norman Street	Hastings Street	Willson Drive	Normanville	Concrete	210		5	5	\$21,128
	83 Brook Place	Norman Avenue	End	Normanville	Concrete	371		5	5	\$37,404
	77 Barton Crescent	Burnard Street	End	Normanville	Concrete	192		5	5	\$19,308
	76 Burnard Street	Carrickalinga Road	Barton Crescent	Normanville	Concrete	53		5	5	\$5,296
	68 O'Connor Street	Ronald Street	Jetty Road	Normanville	Concrete	127		5	5	\$12,798
	66 Ronald Street	Marjory Street	O'Connor Street	Normanville	Concrete	124		5	5	\$12,505
	64 Ronald Street	Marjory Street	Croser Street	Normanville	Concrete	134		5	5	\$13,494
	62 Croser Street	Jetty Road	Ronald Street	Normanville	Concrete	128		5	5	\$12,860
	61 Stacey Drive	James Drive	End	Carrickalinga	Concrete	251		5	5	\$25,318
	60 Stacey Drive	James Drive	End	Carrickalinga	Concrete	216		5	5	\$21,821
	57 Dorset Court	James Drive	End	Carrickalinga	Concrete	222		5	5	\$22,345
	56 Merino Avenue	James Drive	End	Carrickalinga	Concrete	170		5	5	\$17,151
	52 Shakeshaft Drive	Marto Court	The Sands	Carrickalinga	Concrete	80		5	5	\$8,047
	51 Shakeshaft Drive	Parrumba Drive	Marto Court	Carrickalinga	Concrete	117		5	5	\$11,772
	48 Marine Court	Lewis Road	End	Carrickalinga	Concrete	250		5	5	\$25,199
	37 Tuna Crescent	Lyddon Road	Lewis Road	Carrickalinga	Concrete	192		5	5	\$19,332
	33 La Ronde	Dolphin Avenue	Lyddon Road	Carrickalinga	Concrete	323		5	5	\$32,605
	31 Red Gum Place	La Ronde	Riverview Drive	Carrickalinga	Concrete	83		5	4	\$10,405
	131 St Andrews Boulevard	Huntingdale Drive	Augusta Court	Normanville	Concrete	207		5	5	\$20,866
	27 La Ronde	Lyddon Road	Berrima Place	Carrickalinga	Concrete	218		5	5	\$21,970
	25 Sunset Drive	Taronga Crescent	Broadbeach Drive	Carrickalinga	Concrete	95		5	5	\$9,588
	24 Taronga Crescent	Sunset Drive	Broadbeach Drive	Carrickalinga	Concrete	219		5	5	\$22,106
	23 Sunset Drive	Horizon Parade	Broadbeach Drive	Carrickalinga	Concrete	173		5	5	\$17,460
	7 Elizabeth Crescent	Gold Coast Drive	Seaspray Avenue	Carrickalinga	Concrete	273		5	4	\$34,436
	5 Amber Grove	Hutchinson Street	End	Myponga	Concrete	179		5	5	\$18,060
FP-R-0240001	Olive Avenue	Mary Avenue	End	Normanville	Concrete	61	Fair	6	5	\$6,189
FP-L-0240001	Olive Avenue	Mary Avenue	End	Normanville	Concrete	78	Fair	6	5	\$7,893
	113 Hutchinson Street	Amber Grove	End	Myponga	Concrete	216		6	5	\$21,776
	100 Marry Street	Wallman Street	End	Yankalilla	Concrete	78		6	5	\$7,842
	97 Willson Drive	Bower Road	160m East of Panorama Cresce	Normanville	Concrete	178		6	5	\$17,936
	93 Panorama Crescent	Hill Street	End	Normanville	Concrete	105		6	5	\$10,611
	84 Scott Close	Brook Place	End	Normanville	Concrete	129		6	5	\$13,040
	63 Dunstall Road	Ronald Street	Croser Street	Normanville	Concrete	117		6	5	\$11,754
	34 Lyddon Place	La Ronde	End	Carrickalinga	Concrete	49		6	5	\$4,930
	22 Sunset Drive	Horizon Parade	Sunset Drive	Carrickalinga	Concrete	81		6	5	\$8,187
	18 Skyline Close	Horizon parade	End	Carrickalinga	Concrete	52		6	5	\$5,259
	14 View Place	Elizabeth Crescent	End	Carrickalinga	Concrete	107		6	5	\$10,825
	13 View Court	View Place	End	Carrickalinga	Concrete	84		6	5	\$8,516

9 Surf Avenue	Elizabeth Cresent	End	Carrickalinga Concrete	103	6	5	\$10,414
4 Shakeshaft Drive	Marrata Street	End	Carrickalinga Concrete	37	6	5	\$3,765
3 The Sands	Shakeshaft Drive	End	Carrickalinga Concrete	174	6	5	\$17,586
2 Marto Court	Shakeshaft Drive	End	Carrickalinga Concrete	62	6	5	\$6,236
1 Bayvue Close	Horizon Parade	End	Carrickalinga Concrete	62	6	5	\$6,249
132 Kingston Heath Court	St Andrews Boulevard	St Andrews Boulard	Normanville Concrete	67	6	5	\$6,754
133 Augusta Court	St Andrews Boulevard	End	Normanville Concrete	71	6	5	\$7,157